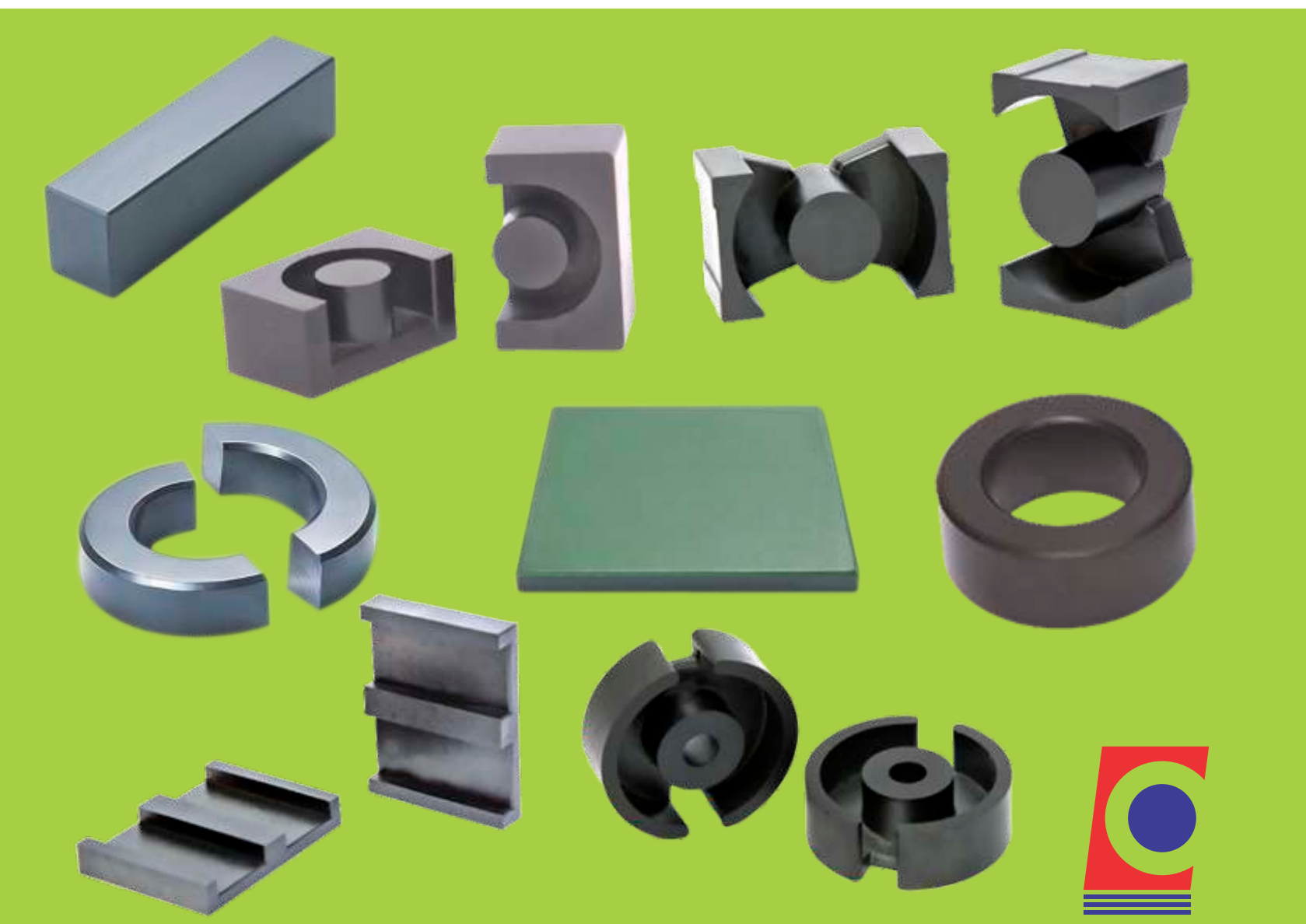




Product Catalogue



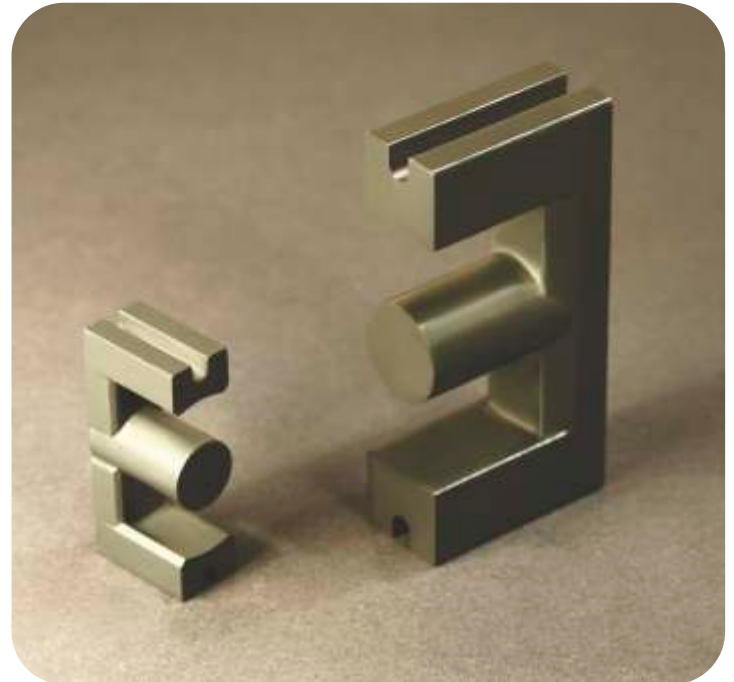
COSMO FERRITES LIMITED, INDIA



COSMO FERRITES LIMITED (CFR), an ISO 9001:2008, ISO 14001:2004 & IATF 16949 Certified Company, for its production process & commitment towards clean environment. Founded in 1986 by promoters with over five decades of standing in the Indian Industry, is today the leading manufacturer of Soft Ferrites in India. The Company has its unit operating in the foothills of the Himalayas at a distance of 300 Kms. from Delhi, Capital of India.

State of the art equipment from leading manufacturers of Europe, rigorous quality standards and well equipped in-house R&D set up ensures delivery of high quality ferrites to our customers along with continuous product up gradation. The Company places overriding value on developing close and long lasting relationships with its customers. Wealth of experience, technical capabilities and resources to support the design and development activities enable Cosmo to deliver customized ferrites on time.

COSMO FERRITES has a leading position in the Indian soft ferrites market. It pioneered the exports of Soft Ferrites from India in 1988 and has been the leading exporter of soft ferrites since then. More than 70% of production is exported to all over the world.



APPLICATIONS SERVED BY CFR RANGE



LIGHTING :

- Electronic Ballast for CFL Lamps
- Electronics Chokes for Tubular Lamps

POWER CONDITIONING :

- UPS/Inverter transformers
- Welding transformers
- Switch Mode Power Supplies
- Medical Electronics
- Telecom Power Supplier Introduction

EMI FILTERS / CHOKES / SENSORS

- EMI / EMC Chokes
- Energy Meters

ULTRASONIC APPLICATIONS SOLAR INVERTER

COSMO PRODUCT PROFILE

PRODUCT

RING CORES (TOROIDS)

UU CORES (FLAT)

UU CORES (VERTICAL)

EE CORES

EI CORES

I CORES

EC CORES

ETD CORES

EER CORES

EFF CORES

EVD CORES

EP CORES

PQ CORES

PM CORES

POT CORES

ROD CORES

PLANNER

RANGE

T0603 TO T152

UU10 TO UU126

UU35 TO UUR64

EE10 TO EE128

EI 22 TO EI40

I 30 TO I 100

EC35 TO EC90

ETD29 TO ETD59

EER28 TO EER53

EFF15 TO EFF30

EVD15 TO EVD25

EP 7 TO EP20

PQ20 TO PQ32

PM62 TO PM87

POT9 TO POT36

ROD 3 TO ROD 8

EI18P TO EI64P

NOTE : CAPS AND BOBBINS IN UL APPROVED MATERIAL CAN BE ARRANGED ON ORDER



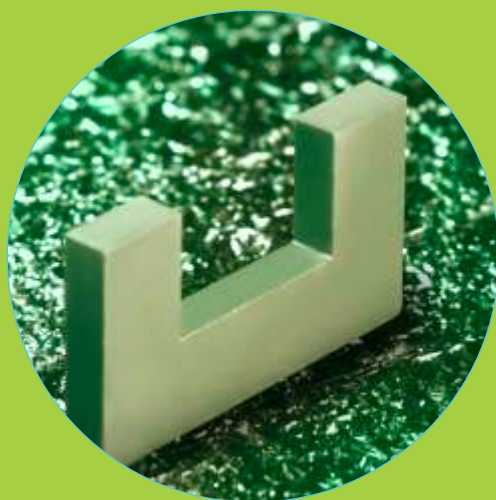
| MnZn Power Grade | | FEATURES | | CONVENTIONAL LOW LOSS | | | |
|-------------------------|------------------------|-----------------------|-------------------|---|--|---|--|
| | | Preferred application | | Low frequency application upto 200 kHz with a minimum power loss at around 60°C | Low frequency application upto 200 kHz with high saturation flux density and a minimum power loss at around 60°C | Low frequency power transformers suitable at frequencies upto 200 kHz | Low frequency and general-purpose power transformers suitable at frequencies upto 200kHz |
| Material properties | Conditions | Symbol | Unit | CF124 | CF130 | CF138 | CF139 |
| Initial Permeability | 25°C, 10kHz, 0.25mT | μ i | | 2500 \pm 20% | 3000 \pm 20% | 2000 \pm 20% | 2100 \pm 20% |
| Saturation Flux Density | 25°C, 10 kHz, 1200A/m | B_s | mT | 490 | 520 | 480 | 490 |
| | 100°C, 10 kHz 1200A/m | B^s | mT | 390 | 410 | 380 | 390 |
| Remnance | 25°C, 10 KHz | Br | mT | 200 | 200 | 180 | 150 |
| Coercivity | 25°C | Hc | A/m | 16 | 15 | 15 | 21 |
| Power loss | 16 kHz, 200 mT, 100°C | Pv | kw/m ³ | 90 | \leq 130 | | |
| | 25 kHz, 200 mT, 100°C | | | 130 | | | |
| | 100 kHz, 100 mT, 100°C | | | | | \leq 90 | \leq 60 |
| | 100 kHz, 200 mT, 25°C | | | | | | |
| | 100 kHz, 200 mT, 100°C | | | | \leq 800 | \leq 450 | \leq 380 |
| | 100 kHz, 200 mT, 140°C | | | | | | |
| | 50 mT, 500 kHz, 100°C | | | | | | |
| 50 mT, 1 MHZ, 100°C | | | | | | | |
| Curie Temperature | | TC | °C | >220 | >220 | >210 | >210 |
| Electrical resistivity | | Γ_{DC} | W-m | 0.5 | 4 | 6 | 8 |
| Density | 25°C | d | kg/m ³ | 4.8 \times 10 ³ | 4.8 \times 10 ³ | 4.8 \times 10 ³ | 4.8 \times 10 ³ |

Data specified here based on the test results of toroids (od. x id. x ht.) 25mmx15mmx12mm



Material Table

| | | HIGH BS & LOW LOSS | WIDE TEMPERATURE RANGE LOW LOSS | | | HIGH FREQUENCY LOW LOSS |
|--|---|---|---|---|--|--|
| Low loss power applications suitable at the frequencies upto 300 kHz | suitable at the frequencies upto 300 kHz with improved loss characteristics | For use in high Bs at power inductors at frequencies upto 200 kHz | For low loss power transformers within a wide temperature range applications from 25°C to 100°C | for automotive application in a wide temperature range from 25°C to 100°C | For automotive applications in a wide temperature range from 25°C to 140°C | For use in general purpose transformers operating at the frequencies of 0.5 MHz to 1 MHz |
| CF297 | CF297A | CF292 | CF295 | CF296 | CF296A* | CF249* |
| 2300 ±20% | 2300 ±20% | 1800 ±25% | 3000 ±20% | 3200 ±20% | 3300 ±20% | 1500±25% |
| 520 | 520 | 500 | 525 | 540 | 540 | 500 |
| 410 | 410 | 440 | 410 | 430 | 430 | 415 |
| 130 | 130 | 150 | 90 | 90 | 90 | 152 |
| 15 | 15 | 24 | 10 | 10 | 10 | 40 |
| | | | | | | |
| | | ≤ 70 | | | | |
| ≤ 700 | ≤ 600 | | ≤ 350 | ≤ 350 | ≤ 300 | |
| ≤ 350 | ≤ 300 | ≤ 410 | ≤ 350 | ≤ 290 | ≤ 300 | |
| | | | | | ≤ 3 80 | |
| | | | | | | ≤ 90 |
| | | | | | | ≤ 480 |
| >210 | >220 | >250 | >215 | >215 | >215 | >240 |
| 4 | 4 | 8 | 5 | 5 | 6 | 14 |
| 4.8×10 ³ | 4.8×10 ³ | 4.8×10 ³ | 4.8×10 ³ | 4.8×10 ³ | 4.8×10 ³ | 4.7×10 ³ |



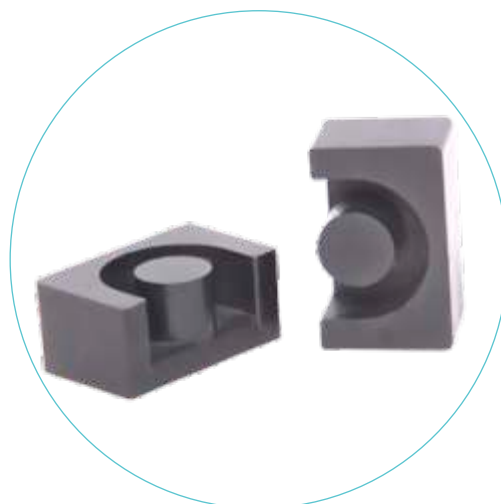
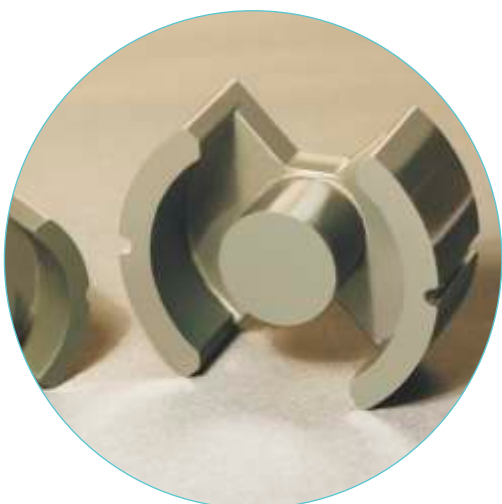
Note :

1. Material data specified here have been derived from measurements on Toroidal Cores T2512.
2. * New materials, under development
3. As per the Company's policy for continuous improvement in the product portfolio, the right to change materials, core designs etc. At any time without notice is reserved.
4. Initial permeability, relative loss factor and Curie temperature are measured at $f = 10\text{KHz}$ and $B = 0.1\text{ mT}$.
5. Disaccommodation factor-Done 10 minutes and 100 minutes after demagnetization.



| MnZn Ferrite Medium & High Permeability Materials | | | | Mid-range Permeability | | |
|---|-----------------------|-----------------------|-------------------|--|---------------------|---------------------|
| | | Preferred Application | | High Bs & stable inductance upto 500 kHz | General purpose | High Bs and Tc |
| | | Preferred Application | | | | |
| Material properties | Conditions | Symbol | Unit | CF191 | CF195 | CF265 |
| Initial Permeability | 25°C, 10kHz, 0.25mT | μ_i | | 4300±20% | 5000±20% | 5000±20% |
| Saturation Flux Density | 25°C, 10 kHz, 1200A/m | B_s | mT | 450 | 400 | 460 |
| | 100°C, 10 kHz 1200A/m | B_s | mT | 300 | 260 | 320 |
| Coercivity | 25°C | H_c | A/m | 12 | 12 | 12 |
| Relative loss factor | 25°C, 10kHz, 0.25mT | T_{and}/μ_i | 10^{-6} | ≤5 | ≤5 | ≤ 5 |
| | 25°C, 100kHz, 0.25mT | | | ≤ 20 | ≤60 | ≤ 25 |
| Curie Temperature | | T_c | °C | >150 | >120 | >160 |
| Electrical resistivity | | Γ_{DC} | W-m | 0.2 | 0.2 | 0.2 |
| Density | 25°C | d | kg/m ³ | 4.8×10 ³ | 4.8×10 ³ | 4.8×10 ³ |

Data specified here based on the test results of toroids (OD. X ID. X HT.) 25mmx15mmx12mm



Material Table

| | | | High Permeability | | | | |
|---|-------------------|--|-------------------|--------------------------------|-------------------|--------------------------------|-------------------|
| High Q factor | General purpose | Stable inductance upto higher operating frequency of 300 kHz | General purpose | Stable inductance upto 200 kHz | General purpose | Stable inductance upto 100 kHz | |
| Broadband Transformers and EMI Suppression Filters | | | | | | | |
| CF255 | CF190 | CF190A | CF197 | CF197A | CF275 | CF199 | CF199A |
| 5500±20% | 6000±20% | 6000±20% | 7000±20% | 7000±20% | 7000±20% | 9000±20% | 10000±30% |
| 440 | 400 | 400 | 400 | 400 | 425 | 400 | 410 |
| 310 | 280 | 280 | 260 | 260 | 240 | 260 | 240 |
| 12 | 10 | 10 | 12 | 12 | 12 | 8 | 8 |
| ≤ 5 | ≤5 | ≤3 | ≤7 | ≤3 | ≤ 5 | ≤ 20 | ≤ 5 |
| ≤ 15 | ≤ 40 | ≤30 | ≤ 60 | ≤30 | ≤ 25 | | ≤ 40 |
| >150 | >120 | >135 | >115 | >120 | >130 | >115 | >120 |
| 0.3 | 0.3 | 0.3 | 0.2 | 0.2 | 0.2 | 0.1 | 0.3 |
| 4.8×10^3 | 4.8×10^3 | 4.8×10^3 | 4.8×10^3 | 4.8×10^3 | 4.8×10^3 | 4.8×10^3 | 4.8×10^3 |

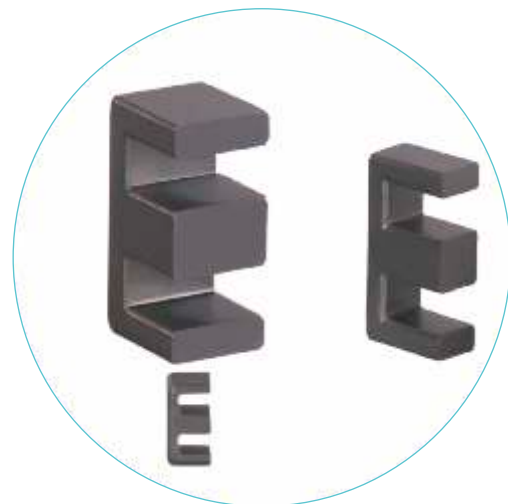
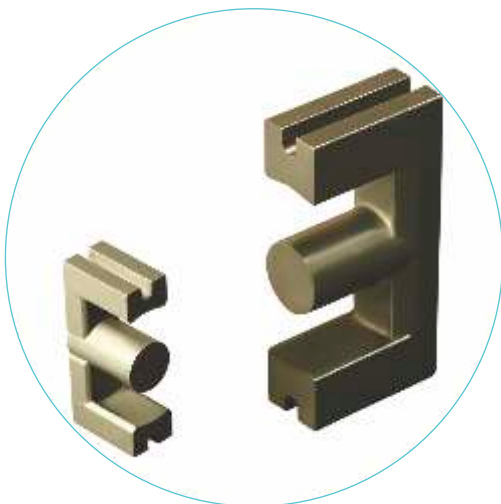




MnZn Ferrite Low Loss Factor Material

| | | Features | | High Q factor |
|--------------------------|-----------------------|-----------------------|-------------------|--|
| | | Preferred application | | For use in proximity switches and resonant circuit inductors |
| Material properties | Conditions | Symbol | Unit | CF140 |
| Initial Permeability | 25°C, 10kHz, 0.25mT | μ_i | | 2500±20% |
| Saturation Flux Density | 25°C, 10 kHz, 1200A/m | B_s | mT | 390 |
| | 100°C, 10kHz 1200A/m | B_s | mT | 310 |
| Remnance | 25°C, 10kHz | B_r | mT | 110 |
| Coercivity | 25°C | H_c | A/m | 24 |
| Relative loss factor | 25°C, 10kHz, 0.25mT | T_{and}/μ_i | 10^{-6} | |
| | 25°C, 100kHz, 0.25mT | | | 2.5 |
| Hysteresis Mat. Constant | 25°C, 10kHz, 1.5-3 MT | h_B | $10^{-6}/mT$ | <0.4 |
| Curie Temperature | | TC | °C | >150 |
| Electrical resistivity | | r_{dc} | W-m | 1 |
| Density | 25°C | d | kg/m ³ | 4.8×10 ³ |

Data specified here based on the test results of toroids (OD. X ID. X HT.) 25mmx15mmx12mm



Material Table

NiZn Ferrite Materials for use in Wideband EMI-Suppression

| Material | Symbol | Unit | CFN-015A | CFN-025 | CFN-030 | CFN-035 | CFN-045 | CFN-050 | CFN-060 | CFN-080 | CFN-150 | CFN-200 |
|------------------------|---------|-------------------|-----------------------------|------------------|------------------|------------------|------------------|------------------|------------------|--------------------------------|--------------------------------|-------------------------------|
| Initial Permeability | μ_i | | 120 ±25% | 250±25% | 300±25% | 350±25% | 450±25% | 500±25% | 600±25% | 800±25% | 1500±25% | 2000±25% |
| Flux Density (4.0kA/m) | Bm | mT | 250 | 360 | 370 | 430 | 360 | 410 | 270 | 352 | 295 | 270 |
| Relative loss factor | tand | 10 ⁻⁶ | <50 (1MHz) <130 (10 MHz) | <40 (2MHz) | <80 (1.5MHz) | <60 (1.0 MHz) | <75 (1.0MHz) | <100 (1.5MHz) | <160 (1MHz) | <15 (0.1MHz) <110 (1.0 MHz) | <30 (0.01MHz) <70 (0.5 MHz) | <20 (0.1MHz) <100 (0.5MHz) |
| Residual Flux Density | Br | mT | 95 | 200 | 170 | 260 | 240 | 250 | 130 | 124 | 50 | 50 |
| Coercive Force (A/m) | Hc | A/m | 93 | 80 | 40 | 90 | 60 | 50 | 60 | 35 | 20 | 20 |
| Curie Temperature | Tc | °C | >300 | >250 | >200 | >200 | >120 | >200 | >130 | >160 | ≥100 | >120 |
| Resistivity | ρ | W.cm | 10 ⁸ | >10 ⁷ | >10 ⁷ | >10 ⁷ | >10 ⁷ | >10 ⁷ | >10 ⁵ | >10 ⁵ | >10 ⁵ | >10 ⁵ |
| Material Density | d | g/cm ³ | 5.1 | >5.0 | >5.0 | >5.0 | >5.0 | >5.0 | >4.8 | >5.0 | >5.0 | >5.0 |

Data specified here based on the test results of toroids (OD. X ID. X HT.) 25mmx15mmx12mm





| Type | Fig | Dimensions (mm) | | | Effective Parameters | | AL (nH)+30% -20% | | | | | | | AL (nH) ±30% |
|--------|-----|-----------------|------------|------------|----------------------|----------------------|---------------------|-------|-------|-------|----------------|-------|-------|-----------------|
| | | OD(mm) | ID(mm) | HT(mm) | Le(mm) | Ae(mm ²) | CF139 | CF297 | CF295 | CF265 | CF195/ 195A | CF190 | CF197 | CF199 |
| T20225 | 2 | 202±4.0 | 153±3.0 | 25.0±1.0 | 550.5 | 608.6 | 2750 | 2880 | 4100 | 5600 | 5300 | 6900 | - | - |
| T15268 | 2 | 152.0±3.0 | 68.0±1.36 | 20±0.4 | 310.9 | 796.1 | 6400 | 7000 | 8800 | 13800 | 13800 | 17400 | - | - |
| T15222 | 2 | 152.0±5.0 | 104±3.60 | 22.0±0.50 | 392.6 | 521.7 | 3300 | 3550 | 4600 | 7400 | 7400 | 9200 | 10700 | - |
| T15219 | 2 | 152.0±5.0 | 104.0±3.6 | 19.0±0.5 | 392.6 | 450.6 | 3000 | 3150 | 4000 | 6400 | 6400 | 8200 | 9300 | 12500 |
| T15215 | 2 | 152.0±5.0 | 104±3.60 | 15±0.50 | 392.6 | 355.7 | 2300 | 2500 | 3200 | 5100 | 5100 | 6200 | 7400 | 9600 |
| T14025 | 2 | 140±3.0 | 103±2.0 | 25±1.0 | 375.8 | 458.9 | 3100 | 3400 | 4200 | 6600 | 6600 | 8200 | 9600 | - |
| T10725 | 2 | 107±2.0 | 65.0±1.3 | 25.0±0.75 | 259 | 514.2 | 4800 | 5400 | 6900 | 11000 | 11200 | 13700 | - | - |
| T10225 | 2 | 102.0±2 | 65.8±1.3 | 25±0.70 | 255.3 | 445.3 | 4400 | 4800 | 6000 | 9800 | 9800 | 12000 | 14200 | - |
| T10222 | 2 | 102.0±2 | 65.8±1.3 | 22.00±0.50 | 255.3 | 391.9 | 4000 | 4200 | 5400 | 8600 | 8600 | 10600 | 12500 | - |
| T10221 | 2 | 102.0±2 | 65.8±1.3 | 21.00±0.5 | 255.3 | 374.1 | 3800 | 4000 | 5100 | 8200 | 8200 | 10100 | 11900 | - |
| T10220 | 2 | 102±2.0 | 65.8±1.3 | 20.0±0.5 | 255.3 | 356.3 | 3600 | 3800 | 5000 | 7800 | 7800 | 9600 | 11400 | - |
| T10218 | 2 | 102.0±2 | 65.8±1.3 | 18.00±0.50 | 255.3 | 320.6 | 3300 | 3500 | 4400 | 7000 | 7000 | 8600 | 10200 | - |
| T10215 | 2 | 102.0±2.0 | 65.8±1.3 | 15.0±0.5 | 255 | 262 | 2700 | 3000 | 3800 | 6400 | 6400 | 7200 | 8600 | 10800 |
| T10020 | 2 | 100.0±3.0 | 55.0±1.5 | 20.0±0.6 | 229.6 | 436.8 | 5000 | 5400 | 6700 | 10700 | 10700 | 13100 | 15400 | - |
| T8756 | 2 | 87.0±1.2 | 56.0±1.0 | 12.7±0.5 | 217.5 | 193.7 | 2350 | 2500 | 3200 | 5000 | 5000 | 6200 | 7400 | - |
| T8720 | 2 | 87.4±1.35 | 54.0±1.0 | 20.0±0.45 | 213.8 | 327.6 | 4000 | 4200 | 5400 | 8600 | 8600 | 10500 | 12400 | 16400 |
| T8714 | 2 | 87.4±1.35 | 54.0±1.0 | 13.8±0.45 | 213.8 | 226.1 | 2800 | 3000 | 3700 | 6200 | 6200 | 7200 | 8600 | 10300 |
| T8530 | 2 | 85.0±1.5 | 62.0±1.5 | 30.0±1.0 | 227.1 | 342.2 | 3800 | 4200 | 5400 | 8500 | 8500 | 10400 | 11900 | 16200 |
| T8520 | 2 | 85.0±1.5 | 62.0±1.5 | 20.0±1.0 | 227.1 | 228 | 2600 | 2750 | 3600 | 5600 | 5600 | 6900 | 8200 | - |
| T8515 | 2 | 85.0±1.5 | 62.0±1.5 | 15.0±1.00 | 227.1 | 171.1 | 2000 | 2100 | 2800 | 4200 | 4200 | 5200 | 6200 | 8000 |
| T8022 | 2 | 80.0±1.5 | 50.0±0.9 | 22.0±1.0 | 196.9 | 324 | 4300 | 4500 | 5800 | 9400 | 9400 | 11200 | 13400 | - |
| T8020A | 2 | 80.0±2.5 | 40.0±1.2 | 20.0±0.5 | 174.2 | 384.4 | 5600 | 6000 | 7700 | 12400 | 12400 | 15200 | 18000 | - |
| T8020 | 2 | 80.0±1.50 | 50.0±0.90 | 20.0±1.00 | 196.9 | 294.5 | 3900 | 4150 | 5200 | 8400 | 8400 | 10300 | 12200 | - |
| T8015A | 2 | 80.0±2.5 | 40.0±1.2 | 15.0±0.5 | 174.2 | 288.3 | 4200 | 4600 | 5800 | 9400 | 9400 | 11400 | 13500 | 16600 |
| T8015 | 2 | 80±1.5 | 50±0.9 | 15±0.5 | 196.9 | 220.9 | 2900 | 3100 | 3900 | 6300 | 6300 | 7800 | 9200 | 12000 |
| T7608 | 2 | 76±1.5 | 64±1.0 | 8±0.4 | 218.8 | 47.9 | 550 | 600 | 750 | 1250 | 1250 | 1500 | 1750 | 2450 |
| T7313 | 2 | 73.7±1.5 | 38.9±0.8 | 12.7±0.5 | 165.4 | 213.6 | 3400 | 3560 | 4600 | 7600 | 7600 | 8900 | 10600 | 13000 |
| T6425 | 2 | 64.25±0.75 | 34.75±0.75 | 25.55±0.35 | 146.1 | 365.2 | 6200 | 6600 | 8450 | 14000 | 14000 | 17200 | 20200 | 27600 |
| T6325 | 2 | 63.0±1.3 | 38.0±0.8 | 25.0±0.5 | 152.08 | 305.93 | 5300 | 5600 | 7200 | 12600 | 12600 | 13900 | 16400 | 20200 |
| T6320 | 2 | 63.0±1.30 | 38.0±0.80 | 20.0±0.50 | 152.1 | 244.7 | 3900 | 4080 | 6000 | 10100 | 9300 | - | 13000 | - |
| T6318 | 2 | 63.0±1.30 | 38.0±0.80 | 18.5±0.50 | 152.1 | 226.4 | 3900 | 4080 | 5600 | 9300 | 9300 | - | - | - |

*Toroids available in UL approved coated material

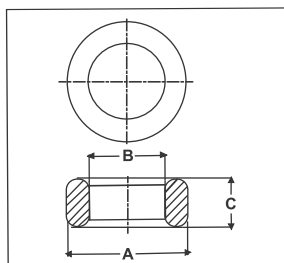


FIG 1

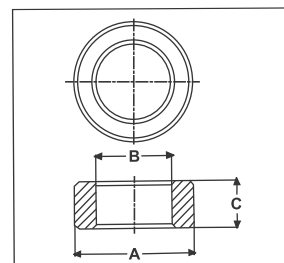


FIG 2

Toroids

| Type | Fig | Dimensions (mm) | | | Effective Parameters | | AL (nH)+30% -20% | | | | | | | AL (nH) ±30% |
|--------|-----|-----------------|-----------|-----------|----------------------|----------------------|---------------------|-------|-------|-------|----------------|-------|-------|-----------------|
| | | OD(mm) | ID(mm) | HT(mm) | Le(mm) | Ae(mm ²) | CF139 | CF297 | CF295 | CF265 | CF195/ 195A | CF190 | CF197 | CF199 |
| T6315 | 2 | 63.0±1.3 | 38.0±0.8 | 15.05±0.4 | 152.1 | 184.2 | 3200 | 3350 | 4500 | 7600 | 7600 | 9100 | 10600 | - |
| T6313 | 2 | 63.0±1.3 | 38.0±0.8 | 12.7±0.3 | 152.1 | 155.4 | 2650 | 2770 | 3850 | 6400 | 6400 | 7700 | 9000 | - |
| T6113 | 2 | 61.0±0.9 | 35.6±0.9 | 12.7±0.3 | 144.6 | 157.4 | 2900 | 3030 | 4100 | 6800 | 6800 | 8200 | 9600 | 11600 |
| T6020 | 2 | 60.0±1.00 | 30.0±0.80 | 20.0±0.50 | 130.7 | 288.3 | 5800 | 6070 | 8300 | 13800 | 13800 | - | - | - |
| T5818A | 2 | 58.3±1.0 | 32±0.7 | 18.5±0.5 | 133.7 | 236.1 | 4600 | 4810 | 6600 | 11000 | 11000 | 13200 | 15460 | 19900 |
| T5818 | 2 | 58.3±1.0 | 40.8±0.8 | 17.6±0.5 | 152.4 | 152.4 | 2700 | 2800 | 3600 | 6250 | 6250 | 7000 | 8800 | 10800 |
| T5806 | 2 | 58.3±1.00 | 40.8±0.80 | 6.0±0.40 | 152.4 | 51.9 | 900 | 940 | 1300 | 2100 | 2100 | 2600 | 3000 | 3850 |
| T5628 | 2 | 56±1.2 | 32±0.65 | 28±0.6 | 131.3 | 327.4 | 6200 | 6490 | 8450 | 14700 | 14800 | 17200 | 20350 | 28200 |
| T5618 | 2 | 56.0±1.2 | 32.0±0.65 | 18.0±0.5 | 131.3 | 210.5 | 4200 | 4400 | 6000 | 10000 | 10000 | 12000 | 14100 | - |
| T5030 | 2 | 50.0±1.0 | 34.0±0.8 | 30.0±0.6 | 128.7 | 237 | 4850 | 5080 | 6950 | 11500 | 11500 | 13800 | 16200 | 18500 |
| T5025 | 2 | 50.0±1.0 | 34.0±0.8 | 25.0±0.5 | 128.7 | 197.5 | 4050 | 4240 | 5800 | 9600 | 9600 | 11500 | 13500 | - |
| T5020 | 2 | 50.0±1.0 | 30.0±0.65 | 20.0±0.5 | 120.4 | 195.7 | 4300 | 4500 | 6100 | 10200 | 10200 | 12200 | 14300 | 17300 |
| T5019 | 2 | 50.0±1.0 | 34.0±0.8 | 19.0±0.5 | 128.7 | 150.1 | 3100 | 3240 | 4400 | 7300 | 7300 | 8800 | 10200 | 12500 |
| T4919 | 2 | 49.0±1.0 | 31.8±0.7 | 19.0±0.5 | 123.1 | 160.9 | 3450 | 3610 | 4900 | 8200 | 8200 | 9800 | 11500 | 14000 |
| T4518 | 2 | 45.0±1.35 | 28.0±0.8 | 18.0±0.40 | 110.5 | 150.2 | 3600 | 3770 | 5100 | 8500 | 8500 | 10200 | 11900 | - |
| T4516 | 2 | 45.0±1.35 | 28.0±0.8 | 16.0±0.4 | 110.5 | 133.5 | 3200 | 3350 | 4500 | 7600 | 9100 | 10600 | 13600 | - |
| T4511 | 2 | 45.0±1.35 | 28.0±0.8 | 11.0±0.4 | 110.5 | 91.8 | 2200 | 2300 | 3100 | 5200 | 5200 | 6200 | 7300 | 10400 |
| T4413 | 2 | 44.5±0.5 | 30±0.4 | 13.5±0.35 | 114 | 96.6 | 2200 | 2300 | 2950 | 4900 | 5000 | 5850 | 6900 | 9600 |
| T4218 | 2 | 42.0±0.6 | 21.0±0.5 | 18.5±0.4 | 91.5 | 186.7 | 5400 | 5650 | 7700 | 12800 | 12800 | 15300 | 17900 | - |
| T4218A | 2 | 41.8±1.0 | 26.2±0.6 | 18.0±0.5 | 103 | 137.9 | 3500 | 3660 | 5000 | 8400 | 8400 | 10100 | 11700 | - |
| T4212 | 2 | 41.8±1.0 | 26.2±0.6 | 12.5±0.3 | 103 | 95.7 | 2450 | 2560 | 3500 | 5800 | 5800 | 7000 | 8200 | - |
| T4016 | 2 | 39.9±0.6 | 24.1±0.5 | 16.0±0.3 | 96.4 | 123.8 | 3400 | 3560 | 4800 | 8000 | 8000 | | | |
| T3829 | 2 | 38.0±0.60 | 22.0±0.45 | 29.0±0.50 | 89.7 | 226.3 | 6600 | 6910 | 9500 | 15800 | 15800 | 17400 | 20600 | 25000 |
| T3821 | 2 | 38.1±0.70 | 19.0±0.50 | 21.0±0.50 | 82.8 | 192.7 | 6100 | 6390 | 8700 | 14600 | 14600 | 16000 | - | - |
| T3819A | 2 | 38.0±0.6 | 22.0±0.45 | 18.5±0.35 | 89.7 | 144.4 | 4200 | 4400 | 6000 | 10100 | 10100 | 12100 | 14100 | - |
| T3819 | 2 | 38.1±0.7 | 25.4±0.5 | 19.0±0.4 | 97.1 | 119 | 3200 | 3350 | 4600 | 7650 | 7650 | 9200 | 10700 | - |
| T3816 | 2 | 38.1±0.7 | 25.4±0.5 | 15.8±0.4 | 97.1 | 98.9 | 2600 | 2720 | 3750 | 6400 | 6400 | 7700 | 8950 | 11500 |
| T3813 | 2 | 38.1±0.5 | 25.4±0.5 | 12.7±0.2 | 97.1 | 79.5 | 2100 | 2200 | 3000 | 5000 | 5000 | 6000 | 7200 | 9250 |
| T3813A | 2 | 38.1±0.7 | 19.0±0.5 | 12.9±0.4 | 82.8 | 118.34 | 3700 | 3870 | 5300 | 8900 | 8900 | 10800 | 12400 | 15900 |
| T3618 | 2 | 36.0±0.70 | 23.0±0.50 | 18.0±0.40 | 89.6 | 95.9 | 2800 | 2930 | 4000 | 6700 | 6700 | 8000 | 9400 | 12100 |
| T3617 | 2 | 36±0.7 | 23±0.5 | 17±0.4 | 89.7 | 108.7 | 3200 | 3350 | 4550 | 7600 | 7600 | 9100 | 10600 | - |
| T3615 | 2 | 36.0±0.7 | 23.0±0.5 | 15.0±0.4 | 89.6 | 89.89 | 2800 | 2930 | 4000 | 6700 | 6700 | 8000 | 9400 | 12000 |
| T3615A | 2 | 36±0.7 | 20±0.5 | 15±0.4 | 83.1 | 116.6 | 3700 | 3870 | 4600 | 8100 | 8200 | 9700 | 11500 | 15800 |
| T3421 | 2 | 34.0±0.70 | 21.8±0.50 | 21.0±0.40 | 84.8 | 126 | 3900 | 4080 | 5600 | 9300 | 9300 | 11200 | 13000 | 16800 |
| T3415 | 2 | 34.0±0.70 | 21.8±0.50 | 15.0±0.30 | 84.8 | 90 | 2800 | 2930 | 4000 | 6650 | 6650 | | | |
| T3115 | 2 | 31.5±1.0 | 19.0±0.6 | 15.0±0.4 | 76 | 91.78 | 3250 | 3400 | 4650 | 7700 | 7700 | 9100 | 10600 | 13650 |

*Toroids available in UL approved coated material



| Type | Fig | Dimensions (mm) | | | Effective Parameters | | AL (nH)+30% -20% | | | | | | | AL (nH) ±30% |
|--------|-----|-----------------|------------|-----------|----------------------|----------------------|---------------------|-------|-------|-------|----------------|-------|-------|-----------------|
| | | OD(mm) | ID(mm) | HT(mm) | Le(mm) | Ae(mm ²) | CF139 | CF297 | CF295 | CF265 | CF195/ 195A | CF190 | CF197 | CF199 |
| T3113 | 2 | 31.0(+0.8,-0.5) | 19.0±0.6 | 13.0±0.5 | 75.49 | 76.46 | 2650 | 2770 | 3800 | 6350 | 6350 | 7650 | 8900 | 11450 |
| T3112 | 2 | 31.5±1.0 | 19.0±0.6 | 12.5±0.4 | 76 | 76.5 | 2650 | 2770 | 3800 | 6300 | 6300 | 7600 | 8800 | 11350 |
| T3109 | 2 | 31.5±1.00 | 19.0±0.6 | 9.5±0.4 | 76 | 58.1 | 2000 | 2090 | 2850 | 4800 | 4800 | 5800 | 6700 | 8650 |
| T3106 | 2 | 31.5±1.0 | 19.0±0.6 | 6.35±0.3 | 76 | 38.9 | 1350 | 1410 | 1900 | 3200 | 3200 | 3850 | 4500 | 5800 |
| T2915 | 2 | 29.6±0.7 | 18.4±0.6 | 14.9±0.4 | 72.6 | 81.9 | 2950 | 3090 | 4250 | 7100 | 7100 | 8500 | 9900 | 12700 |
| T2910 | 2 | 29.50±0.70 | 18.40±0.60 | 10.0±0.40 | 72.5 | 54.5 | 2000 | 2090 | 2800 | 4700 | 4700 | 5650 | 6600 | 8500 |
| T2908 | 2 | 29.6±0.7 | 18.4±0.6 | 8.5±0.4 | 72.6 | 46.71 | 1700 | 1780 | 2400 | 4000 | 4000 | 4850 | 5650 | 7250 |
| T2907 | 2 | 29.6±0.70 | 18.4±0.60 | 7.5±0.30 | 72.6 | 41.2 | 1500 | 1570 | 2100 | 3500 | 3500 | 4300 | 5000 | - |
| T2820A | 2 | 27.5±0.6 | 14.9±0.4 | 20.0±0.4 | 62.6 | 122.1 | 5150 | 5390 | 7300 | 12200 | 12200 | 14700 | 17100 | - |
| T2815 | 2 | 28.0±0.70 | 14.0±0.50 | 14.9±0.40 | 61 | 100.2 | 4300 | 4500 | 6200 | 10300 | 10300 | - | - | - |
| T2813A | 2 | 27.5±0.6 | 14.9±0.4 | 13.0±0.4 | 62.6 | 79.4 | 3350 | 3500 | 4800 | 8000 | 8000 | 9500 | 11100 | 14300 |
| T2715 | 2 | 27.9±0.6 | 19.0±0.4 | 15.0±0.4 | 71.9 | 65.9 | 2300 | 2400 | 3450 | 5700 | 5700 | 6900 | 8000 | 10300 |
| T2620 | 2 | 26 ±0.55 | 14.5±0.35 | 20.0±0.3 | 60.1 | 111.8 | 4900 | 5130 | 7000 | 11600 | 11600 | 14000 | 16300 | 21000 |
| T2615 | 2 | 26.0±0.55 | 14.5±0.35 | 15.0±0.3 | 60.1 | 83.8 | 3650 | 3820 | 5250 | 8750 | 8750 | 10500 | 12200 | 15750 |
| T2610 | 2 | 26.0±0.55 | 14.5±0.35 | 10.0±0.3 | 60.14 | 55.9 | 2350 | 2460 | 3400 | 5700 | 5700 | 7000 | 8200 | 10500 |
| T2520 | 2 | 25.0±0.5 | 15.05±0.5 | 20.0±0.5 | 60.3 | 97.4 | 4300 | 4500 | 6100 | 10100 | 10100 | 12100 | 14200 | - |
| T2515 | 2 | 25.0±0.5 | 15.05±0.5 | 15.0±0.5 | 60.29 | 73.04 | 3200 | 3350 | 4550 | 7600 | 7600 | 9100 | 10600 | 13700 |
| T2513 | 2 | 25.0±0.5 | 15.05±0.5 | 13.0±0.5 | 60.29 | 63.3 | 2750 | 2880 | 3950 | 6600 | 6600 | 7900 | 9200 | 11900 |
| T2512 | 2 | 25.0±0.5 | 15.05±0.5 | 12.0±0.5 | 60.29 | 58.4 | 2450 | 2560 | 3500 | 6100 | 6100 | 7300 | 8500 | 10950 |
| T2510 | 2 | 25.0±0.5 | 15.05±0.5 | 10.0±0.5 | 60.29 | 48.7 | 2100 | 2200 | 3000 | 5100 | 5100 | 6100 | 7100 | 9100 |
| T2212A | 2 | 22.1±0.4 | 13.7±0.3 | 12.7±0.4 | 54.15 | 53.34 | 2600 | 2720 | 3700 | 6200 | 6200 | 7400 | 8650 | 11000 |
| T2212 | 2 | 22.1±0.40 | 13.7±0.30 | 12.0±0.40 | 54.1 | 49.5 | 2400 | 2510 | 3400 | 5700 | 5700 | 6900 | 8000 | 10300 |
| T2210B | 2 | 22.1±0.4 | 13.8min | 10±0.35 | 54.15 | 41.21 | 2100 | 2200 | 2850 | 4800 | 4800 | 5750 | 6700 | 8600 |
| T2208 | 2 | 22.1±0.4 | 13.7±0.3 | 8.0±0.3 | 54.15 | 32.97 | 1700 | 1780 | 2400 | 3800 | 3800 | 4590 | 5350 | 6900 |
| T2206 | 2 | 22.1±0.4 | 13.7±0.3 | 6.35±0.3 | 54.15 | 26.17 | 1300 | 1400 | 1800 | 3000 | 3000 | 3600 | 4200 | 5450 |
| T2112 | 2 | 20.75±.25 | 13.0±0.5 | 12±0.3 | 51.1 | 45.7 | 2300 | 2400 | 3400 | 5500 | 5500 | 6600 | 7700 | 9800 |
| T2106 | 2 | 21.0±0.5 | 13.0±0.5 | 6.0-0.5 | 51.4 | 23.5 | 1200 | 1250 | 1700 | 2850 | 2850 | 3400 | 4000 | 5200 |
| T2104 | 2 | 21.0±0.40 | 13.2±0.50 | 4.1±0.25 | 51.8 | 15.7 | 800 | 830 | 1100 | 1900 | 1900 | 2300 | 2700 | 3400 |
| T2010 | 2 | 20.0±0.4 | 10.0±0.25 | 10.0±0.4 | 43.6 | 48 | 2900 | 3030 | 4150 | 6900 | 6900 | 8300 | 9700 | 12400 |
| T2008 | 2 | 20.0±0.4 | 10.0±0.5 | 8.0±0.4 | 43.6 | 38.41 | 2300 | 2400 | 3300 | 5500 | 5500 | 6600 | 7700 | 9900 |
| T2007 | 2 | 20.0±0.4 | 10.0±0.25 | 7.0±0.3 | 43.6 | 33.6 | 2000 | 2090 | 2900 | 4850 | 4850 | 5800 | 6800 | 8700 |
| T1912 | 2 | 19.0±0.4 | 10.8±0.3 | 12.1±0.4 | 44.4 | 48.3 | 2800 | 2930 | 4100 | 6800 | 6800 | 8200 | 9500 | 12500 |
| T1910 | 2 | 19.0±0.40 | 10.8±0.30 | 10.0±0.30 | 44.4 | 39.9 | 2350 | 2460 | 3350 | 5650 | 5650 | 6750 | 7900 | 10100 |
| T1908 | 2 | 19.0±0.4 | 10.8±0.3 | 8.0±0.25 | 44.4 | 31.9 | 1900 | 1990 | 2700 | 4500 | 4500 | 5400 | 6320 | 8100 |
| T1904 | 2 | 19.0±0.40 | 10.8±0.30 | 3.4±0.25 | 44.4 | 13.6 | 800 | 830 | 1150 | 1900 | 1900 | - | - | - |
| T1812 | 2 | 17.5±0.50 | 11.05±0.30 | 12.0±0.40 | 43.3 | 38 | 2300 | 2400 | 3300 | 5500 | 5500 | 6600 | 7700 | 9900 |
| T1810 | 2 | 17.5±0.5 | 11.05±0.3 | 10.0±0.3 | 43.3 | 31.7 | 1950 | 2040 | 2750 | 4600 | 4600 | 5500 | 6450 | 8250 |
| T1808 | 2 | 17.5±0.50 | 11.05±0.30 | 8.0±0.20 | 43.3 | 25.4 | 1550 | 1620 | 2200 | 3700 | 3700 | 4400 | 5150 | 6600 |
| T1807 | 2 | 17.5±0.5 | 11.05±0.3 | 7.0±0.2 | 43.3 | 22.2 | 1250 | 1300 | 1950 | 3200 | 3200 | 3850 | 4500 | 5800 |
| T1806 | 2 | 17.5±0.5 | 11.05±0.3 | 6.0±0.2 | 43.3 | 19 | 1150 | 1200 | 1650 | 2750 | 2750 | 3300 | 3850 | 4950 |

*Toroids available in UL approved coated material

Toroids

| Type | Fig | Dimensions (mm) | | | Effective Parameters | | AL (nH)+30% -20% | | | | | | | AL (nH) ±30% |
|---------|-----|-----------------|------------|------------|----------------------|----------------------|---------------------|-------|-------|-------|----------------|-------|-------|-----------------|
| | | OD(mm) | ID(mm) | HT(mm) | Le(mm) | Ae(mm ²) | CF139 | CF297 | CF295 | CF265 | CF195/ 195A | CF190 | CF197 | CF199 |
| T1805 | 2 | 17.5±0.50 | 11.05±0.30 | 5.0±0.20 | 43.3 | 15.8 | 950 | 990 | 1400 | 2300 | 2300 | 2750 | 3200 | 4100 |
| T1611 | 2 | 16.0±0.5 | 8.0±0.4 | 11.0±0.4 | 34.8 | 42.3 | 3200 | 3350 | 4600 | 7600 | 7600 | 9100 | 10700 | 13700 |
| T1608 | 2 | 16.0±0.5 | 9.6±0.4 | 8.0±0.3 | 38.5 | 25.1 | 1700 | 1780 | 2450 | 4100 | 4100 | 4900 | 5700 | 7350 |
| T1607 | 2 | 16.0±0.40 | 9.6±0.30 | 7.0±0.20 | 38.5 | 22 | 1500 | 1570 | 2150 | 3600 | 3600 | 4300 | 5000 | 6450 |
| T1606 | 2 | 16.0±0.4 | 9.6±0.3 | 6.3±0.2 | 38.5 | 19.73 | 1350 | 1410 | 1950 | 3200 | 3200 | 3900 | 4500 | 5800 |
| T1605 | 2 | 16.0±0.4 | 9.6±0.3 | 5.0±0.2 | 38.5 | 15.7 | 1075 | 1120 | 1550 | 2600 | 2600 | 3100 | 3600 | 4600 |
| T1528 | 2 | 15.15±0.50 | 9.5±0.40 | 28.15±0.40 | 37.3 | 78.1 | 5500 | 5760 | 7900 | 13100 | 13100 | 15800 | 18400 | 23700 |
| T1407 | 2 | 14.0±0.3 | 9.0±0.2 | 7.0±0.2 | 35 | 17.2 | 1300 | 1360 | 1850 | 3100 | 3100 | 3700 | 4300 | 5550 |
| T1407S2 | 2 | 14.0±0.3 | 8.0±0.25 | 7.0±0.2 | 35 | 17.2 | 1300 | 1360 | 1850 | 3100 | 3100 | 3700 | 4300 | - |
| T1405 | 2 | 14.0±0.3 | 9.0±0.2 | 4.9±0.2 | 35 | 12.05 | 900 | 940 | 1325 | 2250 | 2250 | 2700 | 3100 | 4000 |
| T1306A | 1 | 12.9±0.25 | 7.9±0.2 | 6.2±0.2 | 31.4 | 15.2 | 1250 | 1300 | 1825 | 3050 | 3050 | 3650 | 4250 | 5500 |
| T1306 | 2 | 13.0±0.4 | 7.0±0.3 | 6.0±0.3 | 29.5 | 17.4 | 1550 | 1620 | 2200 | 3700 | 3700 | 4400 | 5200 | 6650 |
| T1305 | 2 | 13.0±0.4 | 7.0±0.3 | 5.0±0.3 | 29.5 | 14.5 | 1250 | 1300 | 1800 | 3000 | 3000 | 3700 | 4300 | 5600 |
| T1305A | 2 | 12.9±0.25 | 7.9±0.2 | 5.0±0.2 | 31.4 | 12.25 | 1030 | 1070 | 1450 | 2450 | 2450 | 2950 | 3450 | 4400 |
| T1303 | 2 | 13.0±0.4 | 7.0±0.3 | 3.2±0.2 | 29.5 | 9.3 | 825 | 860 | 1200 | 1950 | 1950 | 2350 | 2700 | 3500 |
| T1206 | 2 | 12.5±0.40 | 7.5±0.40 | 6.0±0.30 | 30.1 | 14.7 | 1300 | 1360 | 1850 | 3100 | 3100 | 3700 | 4300 | 5500 |
| T1205 | 2 | 12.5±0.4 | 7.5±0.4 | 5.0±0.3 | 30.1 | 12.2 | 1100 | 1150 | 1500 | 2500 | 2500 | 3050 | 3550 | 4600 |
| T1007 | 2 | 10.0±0.30 | 6.0±0.25 | 7.0±0.30 | 24.1 | 13.7 | 1500 | 1570 | 2100 | 3550 | 3550 | 4300 | 5000 | 6400 |
| T1005A | 2 | 10.0±0.3 | 5.5±0.2 | 4.5±0.3 | 23 | 9.8 | 1125 | 1170 | 1600 | 2700 | 2700 | 3200 | 3700 | 4800 |
| T1005 | 2 | 10.0±0.30 | 6.0±0.25 | 5.0±0.30 | 24.1 | 9.8 | 1050 | 1100 | 1500 | 2550 | 2550 | 3050 | 3550 | 4600 |
| T1004 | 2 | 10.0±0.3 | 6.0±0.2 | 4.0±0.3 | 24.1 | 7.83 | 850 | 890 | 1200 | 1900 | 2000 | 2400 | 2800 | 3600 |
| T1003 | 2 | 10.0±0.30 | 6.0±0.25 | 3.0±0.30 | 24.1 | 5.9 | 650 | 680 | 900 | 1550 | 1550 | 1850 | 2150 | 2800 |
| T0906 | 2 | 9.53±0.30 | 4.75±0.20 | 6.00±0.20 | 20.7 | 13.77 | 1750 | 1830 | 2500 | 4200 | 4200 | 5000 | 5900 | 7500 |
| T0905 | 2 | 9.53±0.30 | 4.75±0.20 | 5.18±0.20 | 20.7 | 11.9 | 1500 | 1570 | 2150 | 3600 | 3600 | 4300 | 5050 | 6500 |
| T0904 | 2 | 9.53±0.30 | 4.75±0.20 | 3.80±0.20 | 20.7 | 8.75 | 1100 | 1150 | 1600 | 2650 | 2650 | 3200 | 3700 | 4800 |
| T0903 | 2 | 9.53±0.3 | 4.75±0.2 | 3.18±0.2 | 20.7 | 7.3 | 900 | 940 | 1300 | 2100 | 2100 | 2500 | 3000 | 4000 |
| T0804 | 2 | 8.00±0.30 | 4.0±0.20 | 4.00±0.20 | 17.4 | 7.69 | 1150 | 1200 | 1600 | 2700 | 2700 | 3250 | 3800 | 4900 |
| T0705 | 2 | 7.6±0.2 | 3.4±0.1 | 5.0±0.2 | 15.6 | 10 | 1600 | 1670 | 2300 | 4000 | 4000 | 4800 | 5600 | 7200 |
| T0704A | 2 | 7.6±0.2 | 3.4±0.1 | 4.1±0.2 | 15.55 | 8.16 | 1350 | 1410 | 1900 | 3300 | 3300 | 3950 | 4600 | 5900 |
| T0704 | 2 | 7.62±0.38 | 3.18±0.38 | 4.78±0.25 | 15 | 10 | 1750 | 1830 | 2500 | 4200 | 4200 | 5000 | 5850 | 7500 |
| T0702A | 2 | 7.2±0.20 | 3.3±0.20 | 2.30±0.20 | 14.93 | 4.26 | 700 | 730 | 950 | 1800 | 1800 | 1950 | 2300 | 2900 |
| T0603A | 2 | 6.3±0.25 | 3.8±0.15 | 3.20±0.15 | 15.21 | 3.92 | 700 | 730 | 950 | 1600 | 1600 | 1950 | 2250 | 2900 |

*Toroids available in UL approved coated material



E Cores

| Type | Fig | Dimensions (mm) | | | | | | Effective Parameters | | AL (nH)+30% -20% | | | |
|----------|-----|-----------------|------------|------------|------------|------------|------------|----------------------|----------------------|---------------------|-------|-------|-------|
| | | A | B | C | D | E | F | Le(mm) | Ae(mm ²) | CF139 | CF297 | CF295 | CF195 |
| EE12820 | 3 | 130±3.0 | 89min. | 63.0±1.0 | 43.0±0.5 | 40.0±1.0 | 20.0±1.0 | 285.4 | 792.7 | 6100 | 6600 | 6400 | - |
| EE11036A | 3 | 110±2.0 | 74.5min. | 39±0.4 | 20.8±0.5 | 35.8±0.4 | 36±0.5 | 182.6 | 1251.5 | 15500 | 16900 | 19800 | |
| EE11036 | 3 | 110±2.5 | 74.2min. | 56.0±1.0 | 37.2±1.4 | 36.0±1.0 | 36.0±1.0 | 245.2 | 1294 | 11400 | 12400 | 11900 | - |
| EE10028 | 3 | 100.3±2.0 | 73.2±1.4 | 59.5±0.5 | 46.8±0.8 | 27.5±0.5 | 27.6±0.5 | 274.1 | 739.6 | 6200 | 6700 | - | - |
| EE10021 | 3 | 100.3±2.0 | 73.2±1.4 | 59.5±0.5 | 46.8±0.8 | 27.5±0.5 | 20.62±0.5 | 274.1 | 552.6 | 5000 | 5400 | - | - |
| EE8040 | 3 | 80.0±0.9 | 60.3±0.9 | 38.1±0.33 | 28.53±0.33 | 19.8±0.3 | 39.6±0.4 | 185.1 | 774.6 | 8700 | 9500 | - | - |
| EE8025 | 3 | 80.0±0.9 | 60.3±0.9 | 38.1±0.33 | 28.53±0.33 | 19.8±0.3 | 25.0±0.4 | 185.1 | 489 | 5700 | 6200 | - | - |
| EE8020 | 3 | 80.0±0.9 | 60.3±0.9 | 38.1±0.33 | 28.53±0.33 | 19.8±0.3 | 19.8±0.3 | 185.1 | 387.3 | 4500 | 4900 | - | - |
| EE7219 | 3 | 72.4±1.45 | 53.35±1.1 | 27.95±0.15 | 18.05±0.25 | 19.05±0.38 | 19.05±0.38 | 137 | 367.9 | 6200 | 6700 | 8300 | - |
| EE7091 | 3 | 70.0±1.5 | 48.5min. | 45.5±0.5 | 35.5±0.5 | 19.5±0.5 | 19.5±0.5 | 204 | 386 | 4500 | 4900 | | - |
| EE7032 | 3 | 70.5±1.0 | 48.75±0.75 | 32.95±0.25 | 22.25±0.35 | 21.65±0.35 | 31.6±0.4 | 149.9 | 683 | 9400 | 10200 | - | - |
| EE6527 | 3 | 66.5-2.7 | 44.2±1.8 | 32.5±0.3 | 22.2±0.7 | 20.0-0.7 | 27.4-0.8 | 147 | 532 | 8100 | 8800 | | |
| EE6513 | 3 | 66.5-2.7 | 44.2±1.8 | 32.5±0.3 | 22.2±0.7 | 20.0-0.7 | 13.7-0.6 | 147 | 266 | 4200 | 4600 | 5600 | - |
| EE5541 | 3 | 55.1±1.1 | 38.1±0.75 | 27.5±0.15 | 18.8±0.4 | 16.85±0.3 | 40.95±0.75 | 123.4 | 705.2 | 12800 | 14000 | - | - |
| EE5525 | 3 | 55.0±1.2-0.9 | 37.5±1.2 | 27.8-0.6 | 18.5±0.8 | 17.2-0.5 | 25.0-0.6 | 120 | 422 | 7900 | 8600 | - | - |
| EE5521 | 3 | 55.0±1.2-0.9 | 37.5±1.2 | 27.8-0.6 | 18.5±0.8 | 17.2-0.5 | 21.0-0.6 | 120 | 354 | 6400 | 7000 | 8800 | - |
| EE4716 | 3 | 47.15±0.5 | 31.6min. | 19.7±0.13 | 12.1min. | 15.65±0.2 | 15.65±0.2 | 89.6 | 236.8 | 6000 | 6500 | 8000 | |
| EE4220 | 3 | 42.0±1.0-0.7 | 29.5±1.2 | 21.2-0.4 | 14.8±0.7 | 12.2-0.5 | 20.0-0.8 | 97 | 240 | 5700 | 6200 | 7600 | - |
| EE4215 | 3 | 42.0±1.0-0.7 | 29.5±1.2 | 21.2-0.4 | 14.8±0.7 | 12.2-0.5 | 15.2-0.5 | 97 | 181 | 4100 | 4400 | 5700 | - |
| EE4112 | 3 | 40.7±0.7 | 28.55min. | 16.4±0.2 | 10.55±0.2 | 12.4±0.3 | 12.4±0.3 | 77.5 | 146.6 | 4100 | 4400 | 4300 | 5600 |
| EE4012 | 3 | 41.0±0.7-0.5 | 28.5±0.7 | 17.4±0.5 | 10.25±0.25 | 12.0-0.7 | 12.0-0.7 | 79 | 153 | 4100 | 4400 | - | - |
| EE3611 | 3 | 36.4±0.7 | 25.21±0.7 | 17.8±0.2 | 12.15±0.15 | 9.45±0.25 | 11.25±0.25 | 80.8 | 118 | 3250 | 3500 | - | - |
| EE3512 | 3 | 35.0±0.8-0.7 | 25.0±0.8 | 14.65±0.55 | 9.0±0.3 | 10.3-0.6 | 12.0-0.6 | 67.3 | 120 | 3900 | 4200 | 5100 | - |
| EE3512A | 3 | 34.3±0.7 | 26.0±0.5 | 14.1±0.2 | 9.8±0.2 | 9.3±0.2 | 12.7±0.25 | 69 | 113 | 3550 | 3800 | 4700 | - |
| EE3510 | 3 | 35.0±0.5 | 25.0±0.5 | 17.5±0.25 | 12.5±0.25 | 10.0±0.3 | 10.0±0.3 | 80.7 | 100 | 2800 | 3000 | 3700 | |
| EE3313 | 3 | 33.3±0.5 | 23.6±0.4 | 23.3±0.3 | 19.05±0.3 | 9.7±0.3 | 12.7±0.3 | 104.1 | 118.8 | | - | 3750 | 5750 |
| E3213 | 3 | 31.9±1.0 | 22.77±0.17 | 14.0±0.4 | 9.65±0.25 | 8.9±0.25 | 12.7±0.3 | 66.4 | 113.2 | 3600 | 3900 | - | - |
| EE3211 | 3 | 32.05±0.75 | 23.2±0.5 | 16.1±0.3 | 11.5±0.3 | 9.2±0.3 | 10.65±0.35 | 74.3 | 96.6 | 2900 | 3100 | - | - |
| EE3209 | 3 | 32.05±0.75 | 23.2±0.5 | 16.1±0.3 | 11.5±0.3 | 9.2±0.3 | 9.15±0.35 | 74.3 | 83 | 2600 | 2800 | 3500 | 5250 |
| EE3014 | 3 | 30.1±0.7 | 19.9±0.4 | 15.0±0.2 | 10±0.3 | 6.95±0.25 | 14.6-0.5 | 67 | 122 | 3500 | 3800 | - | - |
| EE3012 | 3 | 30.1±0.7 | 19.9±0.4 | 15.0±0.2 | 9.7±0.5 | 6.95±0.25 | 12.6-0.5 | 65.5 | 104.6 | 3450 | 3700 | - | - |
| EE3011 | 3 | 30.0±0.6 | 20.2±0.5 | 13.1±0.2 | 8.1±0.2 | 10.7±0.3 | 10.7±0.3 | 57.9 | 108.7 | 4200 | 4600 | 5600 | - |
| EE3007 | 3 | 30.0±0.8-0.6 | 19.5±0.8 | 15.2-0.4 | 9.7±0.6 | 7.2-0.5 | 7.3-0.5 | 67 | 60 | 1900 | 2000 | - | - |

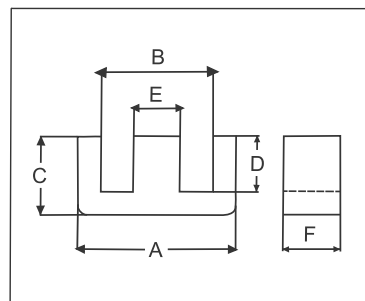


FIG. 3

| Type | Fig | Dimensions (mm) | | | | | | Effective Parameters | | AL (nH)+30% -20% | | | |
|---------|-----|-----------------|-----------|------------|-----------|-----------|-----------|----------------------|----------------------|---------------------|-------|-------|-------|
| | | A | B | C | D | E | F | Le(mm) | Ae(mm ²) | CF139 | CF297 | CF295 | CF195 |
| EE2811 | 3 | 28.2±0.4 | 19.2±0.4 | 10.6±0.3 | 6.6±0.2 | 7.1±0.4 | 10.7±0.3 | 49.5 | 84.4 | 3750 | 4100 | 4950 | 7100 |
| EE2532 | 3 | 25.3±0.5 | 19.3±0.42 | 15.9±0.2 | 12.7±0.3 | 6.5±0.3 | 7.0-0.5 | 73.5 | 42 | 1300 | 1400 | 1800 | 2700 |
| EE2511 | 3 | 25.0±0.8 | 17.5±0.8 | 12.8-0.5 | 8.7±0.5 | 7.5-0.5 | 11.0±0.3 | 57.5 | 84.7 | 3300 | 3600 | - | - |
| EE2507 | 3 | 25.0±0.8 | 17.5±0.8 | 12.8-0.5 | 8.7±0.25 | 7.25±0.25 | 7.2±0.3 | 57.5 | 52.5 | 1900 | 2000 | - | - |
| EE2507V | 3 | 25.05±0.75 | 19.0min. | 12.55±0.25 | 8.7±0.5 | 7.5-0.5 | 11.0±0.3 | 57.5 | 52.5 | 1900 | 2000 | - | - |
| EE2506M | 3 | 25.45±0.65 | 19.2±0.4 | 9.78-0.15 | 6.78-0.3 | 6.3±0.2 | 6.3±0.25 | 49.2 | 38.8 | 1700 | 1800 | - | - |
| EE2506 | 3 | 25.45±0.65 | 19.2±0.4 | 9.78-0.15 | 6.78-0.3 | 6.3±0.25 | 6.3±0.25 | 48 | 40 | 1700 | 1800 | 2200 | 3050 |
| EE2504 | 3 | 25.05±0.5 | 17.9±0.4 | 11.15±0.25 | 7.55±0.25 | 7.25±0.25 | 4.5±0.2 | 52.1 | 32.3 | 1350 | 1400 | 1800 | 2600 |
| EE2213 | 3 | 22.3±0.5 | 15.5min | 8.3±0.4 | 5.4±0.4 | 6.2±0.2 | 12.9±0.3 | 40.9 | 78.0 | 3000 | 3200 | 3600 | 4600 |
| EE2011B | 3 | 20.0±0.4 | 15.5min | 9.9±0.2 | 7.5±0.3 | 5.7±0.2 | 10.6±0.2 | 47.1 | 53.2 | 1780 | 1900 | 1980 | 2400 |
| EE2011S | 3 | 20.4-0.8 | 14.1±0.8 | 10.1-0.4 | 7.0±0.4 | 5.9-0.4 | 11.0±0.25 | 44.9 | 65.22 | 3100 | 3300 | 4100 | 5850 |
| EE2005A | 3 | 20.0±0.4 | 14.6±0.3 | 10.9±0.15 | 8.25±0.15 | 5.65±0.15 | 5.6±0.20 | 50.5 | 30.7 | 1300 | 1400 | 1750 | 2550 |
| EE2005S | 3 | 20.4-0.8 | 14.1±0.8 | 10.1-0.4 | 7.0±0.4 | 5.9-0.4 | 5.9-0.4 | 44.9 | 33.5 | 1450 | 1500 | 1900 | 2650 |
| EE2005K | 3 | 20.0±0.7 | 12.8±0.7 | 10.2-0.4 | 6.3±0.5 | 5.2-0.4 | 5.3-0.4 | 43 | 31 | 1400 | 1500 | 1800 | 2500 |
| EE1910A | 3 | 19.1±0.4 | 14.0min. | 8.0±0.18 | 5.7min. | 4.75±0.2 | 9.5±0.20 | 40.1 | 45.5 | 2300 | 2500 | 2800 | 3800 |
| EE1910B | 3 | 19.2±0.4 | 14.4±0.3 | 8.2±0.3 | 5.8±0.2 | 5.95±0.25 | 9.0±0.3 | 31 | 61.6 | 2300 | 2500 | - | - |
| EE1906B | 3 | 19.0±0.4 | 14min | 8.0±0.13 | 5.70±0.13 | 4.80±0.20 | 5.50±0.20 | 39.26 | 26.6 | - | - | 1400 | - |
| EE1905A | 3 | 19.0±0.4 | 14.3±0.3 | 8.0±0.13 | 5.7±0.13 | 4.8±0.2 | 4.8±0.20 | 39.6 | 22.5 | 1200 | 1300 | 1550 | 2200 |
| EE1905S | 3 | 19.0±0.3 | 14.5±0.3 | 7.9±0.2 | 5.6±0.15 | 4.7-0.5 | 5.2-0.4 | 39.3 | 22.7 | 1100 | 1200 | - | - |
| EEL1905 | 3 | 19.0±0.3 | 14.0±0.3 | 13.55±0.2 | 11.3±0.3 | 4.85±0.25 | 4.85±0.25 | 61.7 | 23.4 | 850 | 900 | 1100 | 1700 |
| EE1906A | 3 | 19.0±0.4 | 14.0min | 8.0±0.13 | 5.7±0.13 | 4.8±0.2 | 6.5±0.25 | 39.7 | 30.3 | 850 | 900 | 1100 | 1700 |
| EE1609D | 3 | 16.2±0.4 | 11.7min | 7.3±0.3 | 5.4±0.3 | 4.0±0.2 | 9.9±0.3 | 35.8 | 39.3 | 2200 | 2400 | - | - |
| EE1610 | 3 | 16.1±0.6 | 12.1±0.3 | 7.7±0.15 | 5.4±0.2 | 3.9±0.2 | 9.8±0.2 | 36.3 | 40.4 | 2100 | 2300 | 2600 | - |
| EE1608A | 3 | 16.4±0.35 | 12min | 5.3±0.15 | 3.3±0.15 | 4.5±0.15 | 8±0.2 | 27.3 | 33.6 | 2200 | 2400 | 2800 | - |
| EE1608A | 3 | 16.4±0.35 | 12.0min | 5.3±0.15 | 3.3±0.15 | 4.5±0.15 | 8.0±0.2 | 27.5 | 33.17 | 2200 | 2400 | 3000 | - |
| EE1605 | 3 | 16.0±0.7 | 11.3±0.6 | 8.2±0.3 | 5.7±0.4 | 4.7±0.3 | 4.7±0.4 | 37.6 | 20.1 | 1050 | 1100 | 1450 | - |
| EE1605 | 3 | 16.0±0.7 | 12.1±0.3 | 12.45±0.2 | 10.25±0.2 | 4.0±0.2 | 4.8±0.2 | 55.6 | 19.3 | 750 | 800 | 1000 | - |
| EE1605A | 3 | 16.0±0.7 | 11.3±0.6 | 5.7±0.12 | 3.9±0.15 | 4.5±0.15 | 4.5±0.2 | 28.6 | 19.1 | 1050 | 1100 | - | - |
| EE1607C | 3 | 16.1±0.6 | 11.6±0.3 | 6.0±0.2 | 4.0±0.2 | 4.5±0.15 | 7.15±0.25 | 29.7 | 30.7 | 1700 | 1800 | - | - |
| EE1607N | 3 | 16.1±0.6 | 11.6±0.3 | 8.05±0.15 | 5.9±0.2 | 4.5±0.15 | 7.1±0.4 | 37.6 | 30.8 | 1700 | 1800 | - | - |
| EE1605D | 3 | 16.2±0.4 | 11.7min | 7.30±0.3 | 5.4±0.3 | 4.0±0.2 | 4.8±0.2 | 35.1 | 19 | 1050 | 1150 | - | - |
| EE1605B | 3 | 16.1±0.6 | 12.1±0.3 | 6.95±0.15 | 5.4±0.2 | 4.0±0.2 | 4.8±0.2 | 34.9 | 17.3 | 1000 | 1090 | 1300 | - |
| EE1410 | 3 | 14.5±0.3 | 11.2min. | 7.2±0.15 | 5.0±0.15 | 3.5±0.15 | 10.0±0.15 | 33.3 | 34.8 | - | - | - | -- |
| EE1410A | 3 | 14.5±0.3 | 11.2min. | 7.0±0.15 | 4.85±0.15 | 3.5±0.15 | 10.0±0.15 | 32.2 | 35.2 | 1700 | 1800 | 2100 | - |
| EE1407 | 3 | 14.3±0.3 | 10.9±0.25 | 4.85±0.15 | 3.15±0.15 | 3.55±0.15 | 7.5±0.15 | 25.3 | 25.3 | 1700 | 1800 | 2100 | -- |
| EE1404 | 3 | 13.95±0.35 | 10.8±0.3 | 7.65±0.15 | 5.4±0.2 | 4.15±0.15 | 4.15±0.15 | 33.9 | 15.5 | 900 | 980 | 1200 | 1600 |
| EE1310C | 3 | 13.5±0.35 | 10.0min | 6.2±0.15 | 4.65±0.15 | 2.75±0.2 | 9.8±0.2 | 31.9 | 26.5 | 1750 | 1900 | 2200 | -- |
| EE1306C | 3 | 13.5±0.35 | 10.0min | 6.2±0.15 | 4.65±0.15 | 2.75±0.2 | 6.15±0.15 | 31.2 | 17.9 | 1350 | 1470 | - | -- |
| EE1306 | 3 | 12.65±0.45 | 9.2±0.3 | 6.5-0.2 | 4.5+0.3 | 3.7-0.3 | 6.3-0.3 | 29.6 | 22.4 | 1500 | 1600 | 1850 | 2600 |
| EE1304 | 3 | 12.65±0.45 | 9.2±0.3 | 6.5-0.2 | 4.5+0.3 | 3.7-0.3 | 3.7-0.3 | 29.6 | 13 | 850 | 900 | 1100 | 1500 |
| EE1011B | 3 | 10.8±0.3 | 7.7min | 5.7±0.3 | 4.4±0.2 | 2.5±0.2 | 5.0±0.2 | 25.97 | 11.79 | 900 | 980 | - | - |



UU Cores

| Type | Fig | Dimensions (mm) | | | | | Effective Parameters | | AL (nH)+30% -20% | | | |
|----------|-----|-----------------|-----------|------------|----------------|------------|----------------------|----------------------|---------------------|-------|-------|-------|
| | | A | B | C | D | E | Le(mm) | Ae(mm ²) | CF139 | CF297 | CF295 | CF195 |
| UU14130 | 16 | 141±5.0 | 50min. | 78.5±0.5 | 33.5±1.0 | 30±1.0 | 377 | 1350 | 8000 | 8700 | | - |
| UU12620 | 16 | 126.0±4.0 | 70.0±2.0 | 91.0±1.0 | 63.0±2.0 | 20.0±0.6 | 480 | 560 | 2800 | 3000 | - | - |
| UU12643 | 16 | 126.0±4.0 | 70.0±2.0 | 91.0±1.0 | 63.0±2.0 | 43±0.8 | 486.1 | 972 | 4800 | 5200 | - | - |
| UU12020 | 16 | 120±2.5 | 60±1.20 | 45±0.50 | 15±0.5 | 20±0.60 | 274.2 | 600 | 5400 | 5900 | | |
| UU10130 | 16 | 101.9±2.0 | 45min | 76±0.5 | 48±0.9 | 30.6±0.6 | 368 | 840 | 5600 | 6100 | - | |
| UU100115 | 16 | 101.6±2.0 | 49min | 57.1±0.4 | 31.7±0.7 | 25.2±0.7 | 306 | 620 | 4700 | 5100 | 6350 | |
| UU100A | 16 | 101.6±2.0 | 49min | 57.5±0.40 | 31.7±0.40 | 12.7±0.38 | 308 | 321 | 2600 | 2800 | - | |
| UU9352 | 16 | 93.0±1.8 | 36.2±1.2 | 52.0±0.5 | 24.0±0.5 | 30.0±0.6 | 256 | 838 | - | | - | - |
| UU9330 | 16 | 93.0±1.8 | 36.2±1.2 | 76.0±0.5 | 48.0±0.9 | 30.0±0.6 | 354 | 840 | 5500 | 6000 | - | - |
| UU9330B | 16 | 93.0±1.8 | 34.6min | 76±0.50 | 48±0.90 | 30±0.50 | 354 | 840 | - | | - | |
| UU9320 | 16 | 93.0±1.8 | 34.6min | 76±0.50 | 48±0.90 | 20±0.50 | 355 | 560 | - | | - | |
| UU9316 | 16 | 93.0±1.8 | 37.0±1.2 | 76.0±0.8 | 48.0±0.8 | 16.0±0.6 | 354 | 448 | 2800 | 3000 | 3700 | - |
| UU9115 | 16 | 91.28±2.03 | 18.26±1.6 | 66.04±1.32 | 36.52±0.6(Web) | 15.87±0.63 | 253 | 612 | | - | - | - |
| UU8804 | 16K | 88±1.2 | 26±0.6 | 44±0.6 | 31.0±0.4(Web) | 4.0±0.2 | - | - | - | | - | - |
| UU8020 | 16 | 80.0±2.0 | 40.0±0.8 | 49.0±0.5 | 29.0±0.3 | 20.0±0.5 | 258.8 | 400 | 3900 | 4200 | - | - |
| UU7020 | 16 | 68.4±1.6 | 28.4±0.6 | 57.5±0.5 | 37.5±0.5 | 20.0±0.5 | 269.8 | 400 | 3600 | 3900 | 5000 | 7800 |
| UU6616 | 16 | 66±0.8 | 33.0±0.8 | 60.5±0.3 | 44.0±0.5 | 16.5±0.3 | 293.8 | 272.3 | 2300 | 2500 | - | - |
| UU6204 | 16K | 62±0.7 | 16±0.3 | 31±0.5 | 23.0±0.3(Web) | 4±0.2 | | | | - | | - |
| UU6060 | 16 | 59.5±0.80 | 29.2±0.70 | 55±0.25 | 40±0.60 | 28.0±0.80 | 265.8 | 228.8 | 2100 | 2300 | | |
| UU6015 | 16 | 59.5±0.8 | 29.2±0.7 | 55.0±0.25 | 40.0±0.6 | 15.25±0.5 | 265 | 228 | 2100 | 2300 | 2900 | 4500 |
| UU4730 | 16 | 47.0±0.6 | 31min | 25.0±0.5 | 10.0±0.5 | 30±0.6 | 161.8 | 570.1 | - | | 6000 | - |
| UU4628 | 16 | 46.8±0.7 | 17.5min | 39.5±0.25 | 25.5±0.75 | 28.0±0.8 | 182.8 | 397.7 | 4700 | 5100 | 4900 | 6600 |
| UU2537 | 16 | 24.5±0.7 | 9.9±0.3 | 18.4±0.5 | 10.85±0.25 | 7.55±0.25 | 86.5 | 53.9 | 1300 | 1400 | - | 2750 |
| UU2332 | 16 | 23.0±0.60 | 8.0±0.30 | 15.7±0.30 | 8.5±0.25 | 7.55±0.25 | 74 | 61 | | - | 1900 | 3850 |
| UU2130A | 16 | 21.0±0.6 | 6.3±0.3 | 15.8±0.25 | 8.75±0.25 | 7.5±0.3 | 70.2 | 54.3 | 1650 | 1800 | 2100 | 3000 |
| UU2130 | 16 | 21.0±0.6 | 6.3±0.3 | 15.3±0.5 | 8.25±0.25 | 7.5±0.3 | 68 | 55 | 1650 | 1800 | 2150 | - |
| UU1620 | 16 | 16.0±0.2 | 7.0±0.3 | 10.6±0.2 | 6.0±0.15 | 6.0±0.15 | 52 | 27 | 1000 | 1000 | 1300 | 1700 |
| UU11522 | 16 | 15.2±0.7 | 5.2±0.3 | 11.1±0.5 | 6.1±0.35 | 6.45±0.25 | 48 | 32 | 1350 | 1400 | 1750 | 2400 |
| UU1116 | 16 | 10.5±0.2 | 5.5±0.2 | 7.9±0.2 | 5.3±0.15 | 5.0±0.15 | 40 | 13 | 700 | 750 | 900 | 1300 |

| Type | FIG | Dimensions (mm) | | | | | | | | | Effective Parameters | | AL (nH)+30% -20% | | |
|---------|-----|-----------------|-----------|------------|------------|-----------|-----------|----------|-----------|-----------|----------------------|----------------------|---------------------|-------|-------|
| | | A | B | C | D | E | E1 | E2 | F | G | Le(mm) | Ae(mm ²) | CF139 | CF297 | CF124 |
| UU9330C | 16C | 93.0±1.8 | 36.2±1.20 | 76.0±0.50 | 48.0±0.90 | - | - | - | 30.0±0.60 | - | - | - | - | - | - |
| UR8185 | 16H | 82±2 | 47.5min | 44.7±0.8 | 31±0.5 | 17.0±0.6 | - | - | 4.5±0.5 | - | 256.4 | 207.5 | - | - | |
| UR6940 | 16H | 63.5±2 | 35min | 39.5±0.5 | 25±0.5 | 17.2±0.6 | - | - | 3.5±0.5 | - | 209 | 227.6 | - | - | |
| UR6440 | 16A | 64.0±1.95 | 23.0min | 40.5±0.2 | 26.5±0.4 | - | 20.0±0.2 | 5.0±0.25 | 24.0±0.3 | 9.6±0.45 | 210 | 290 | 3300 | 3600 | 3800 |
| UU6418 | 16 | 63.5±0.7 | 52.5±0.7 | 18±0.15 | 10.75±0.2 | - | - | - | 18±0.3 | - | 99 | 117 | 1490 | 1600 | - |
| UR5536 | 16B | 54.9±1.1 | 20.0±0.4 | 37.5±0.25 | 25.5±0.4 | 23.5±0.45 | - | - | 36.0±0.7 | 12.0±0.4 | 188 | 418 | 5200 | 6400 | 7000 |
| UU5972 | 16H | 50.5±1.0 | 26.5±1.0 | 35.8±0.2 | 21.9±0.5 | 17±0.4 | - | - | 4.5±0.2 | - | 189 | 210 | 2650 | 2900 | 3200 |
| UU5756 | 16D | 49.8±0.8 | 27.9±1.0 | 28.4±0.2 | 16.0±0.4 | 15.5±0.4 | - | 15.9±0.4 | - | 4.8±0.2 | 163 | 171 | 2450 | 2600 | 2900 |
| UU5020 | 16 | 50±0.8 | 20±0.6 | 30±0.3 | 20±0.4 | - | 10±0.4 | 20±0.6 | 20±0.5 | - | 154.5 | 247.8 | 3700 | 3900 | - |
| UU4918 | 16 | 48.8±0.5 | 36.8±0.5 | 18±0.1 | 10.75±0.2 | - | - | - | 18±0.3 | - | 108 | 120 | 1750 | 1900 | - |
| UU4718 | 16E | 47.4±0.8 | 19.5±0.6 | 24.5±0.2 | 15.8±0.2 | 13.2±0.3 | - | - | 14.7±0.3 | 18.0±0.4 | 145 | 153 | 2450 | 2600 | - |
| UU4628A | 16C | 46.8±0.7 | 17 | min | 39.5±0.25 | 25.5±0.75 | - | - | - | 28.0±0.80 | 182.8 | 397.7 | - | - | - |
| UU4012 | 16 | 40±1.0 | 26.8±1.0 | 23.7±0.1 | 17.72±0.15 | - | - | - | 11.7±0.3 | - | 69.9 | 73.7 | 1170 | 1250 | - |
| UU3549 | 16F | 35.0±0.50 | 17.3 | min | 24.5±0.30 | 16.9±0.30 | 9.6±0.30 | - | - | 7.6±0.30 | 128.1 | 73 | 1300 | 1400 | 1400 |
| UU3562 | 16F | 35.2±0.50 | 13.2 | min | 30.8±0.30 | 20.5±0.40 | 12.7±0.20 | - | - | 9.3±0.30 | 141.4 | 113.5 | 1900 | 2000 | 2000 |
| UU3544 | 16F | 34.7±0.50 | 13.8 | min | 21.9±0.30 | 12.5±0.5 | 11.5±0.30 | - | - | 9.5±0.30 | 108 | 101.6 | 2150 | 2300 | 2250 |
| UU2840 | 16I | 27.8±0.4 | 9±0.4 | 21.2±0.20 | 13.3±0.3 | 11.2±0.30 | 13.6±0.4 | 11.2±0.4 | 7.5±0.30 | - | 99.8 | 105 | 2500 | 2700 | - |
| UU2515 | 16G | 25.4±0.40 | 14.5 | min | 7.7±0.15 | 4.7±0.20 | 14.9±0.25 | - | - | 7.5±0.20 | 66.3 | 40.45 | 1300 | 1400 | 1400 |
| UU2411 | 16 | 24.3±0.6 | 14.06±0.3 | 16.65±0.25 | 11.68±0.25 | - | - | - | 11.1±0.3 | - | 89.3 | 56.1 | 1400 | 1500 | - |
| UU1910 | 16J | 18.5±0.40 | 7.1 | min | 11.6±0.20 | 7.3±0.60 | 10.0±0.3 | - | - | 7.0±0.30 | 59.6 | 40.22 | 1450 | 1550 | 1500 |

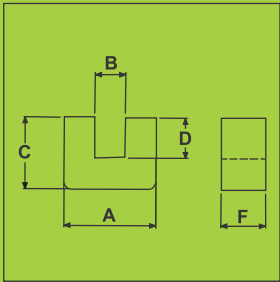


FIG. 16

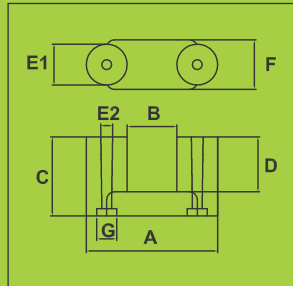


FIG. 16A

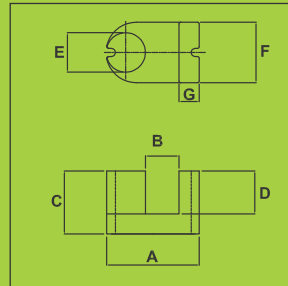


FIG. 16B

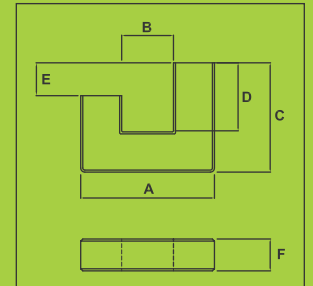


FIG. 16C

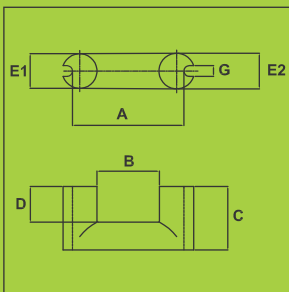


FIG. 16D

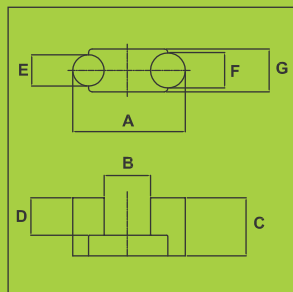


FIG. 16E

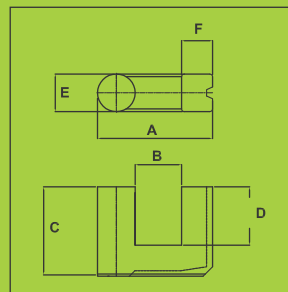


FIG. 16F

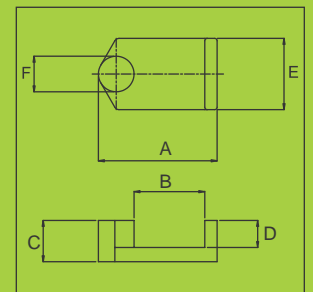


FIG. 16G

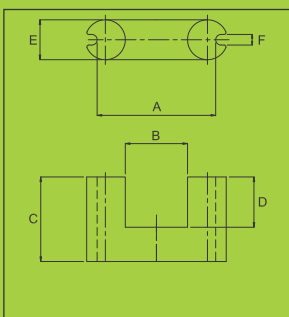


FIG. 16H

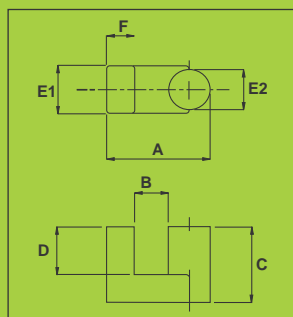


FIG. 16I

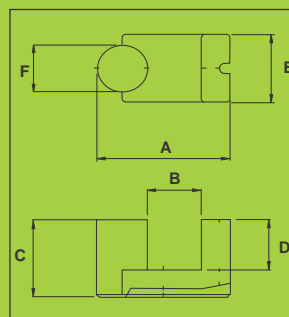


FIG. 16J

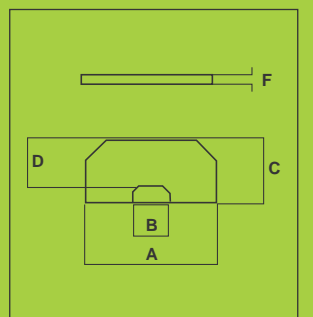


FIG. 16K



EVD, EFC CORES

| Type | Fig. | DIMENSIONS (mm) | | | | | | | Effective Parameters | | AL (nH)+30% -20% | | |
|----------|------|-----------------|----------|-----------|-----------|----------|----------|-----------|----------------------|----------------------|---------------------|-------|-------|
| | | A | B | C | D | E | F | G | Le(mm) | Ae(mm ²) | CF139 | CF297 | CF295 |
| EVD2513S | 18 | 25.0±0.8-0.7 | 19.2±0.4 | 12.6±0.25 | 9.55±0.25 | 8.8±0.25 | 12.7-0.5 | 8.3±0.3 | 60 | 73 | 2450 | 2600 | |
| EVD2513 | 22 | 25.0±0.8-0.7 | 19.2±0.4 | 12.6±0.25 | 9.55±0.25 | 8.8±0.25 | 12.7-0.5 | 8.3±0.3 | 60 | 73 | 2700 | 2900 | 3700 |
| EVD1509 | 20 | 14.9±0.6 | 11.1±0.3 | 8.85±0.15 | 6.2±0.2 | 5.6±0.2 | 6.8±0.2 | 4.6±0.2 | 38.7 | 27.7 | 1500 | 1600 | |
| EFC2508 | 22 | 25.1±0.4 | 21.0 min | 12.5±0.2 | 9.0±0.2 | 11.5±0.2 | 8.0±0.2 | 3.95±0.15 | 59.2 | 46.4 | 1750 | 1900 | |

EI CORES

| Type | Fig. | DIMENSIONS (mm) | | | | | | | Effective Parameters | | AL (nH)+30% -20% | | | |
|---------|------|-----------------|----------|----------|------------|----------|----------|---------|----------------------|----------------------|---------------------|-------|-------|-------|
| | | A | B | C | D | E | F | G | Le(mm) | Ae(mm ²) | CF139 | CF297 | CF295 | CF195 |
| EI4012 | 21 | 40.0±0.5 | 27.2+1.0 | 27.2±0.5 | 20.0±0.5 | 12.0-0.7 | 12.0-0.7 | 7.5±0.3 | 76.8 | 148 | 3950 | 4300 | 5100 | |
| EI3512T | 21 | 35.0±0.8-0.5 | 25.0±0.8 | 23.8±0.7 | 18.0±0.6 | 10.3-0.6 | 11.7±0.3 | 5.5±0.2 | 67.3 | 120 | 3600 | 3900 | | |
| EI3313 | 21 | 33.0±0.5 | 23.2±0.8 | 23.3±0.3 | 19.05±0.35 | 9.7±0.3 | 12.7±0.3 | 5.0±0.2 | 66.9 | 118.1 | 3600 | 3900 | 4600 | |
| EI3011 | 21 | 30.0±0.7-0.2 | 20.0±0.7 | 21.0±0.6 | 16.0±0.6 | 11.0-0.7 | 11.0-0.7 | 5.5±0.5 | 58.5 | 110.4 | 3800 | 4100 | 4800 | |
| EI2811 | 21 | 28.0±0.4 | 18.6±0.8 | 17.3±.3 | 12.8±0.2 | 7.5-0.8 | 11.0-0.6 | 3.5±0.2 | 49.5 | 84.4 | 3600 | 3900 | 4600 | 6600 |

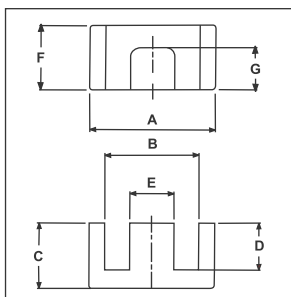


FIG. 18

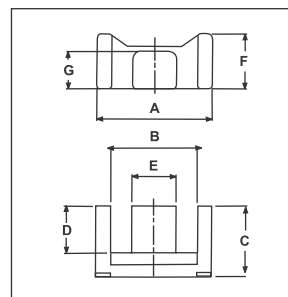


FIG. 19

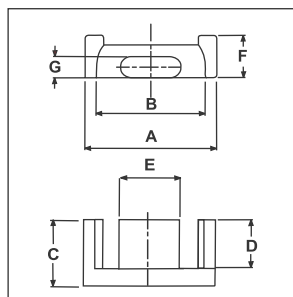


FIG. 20

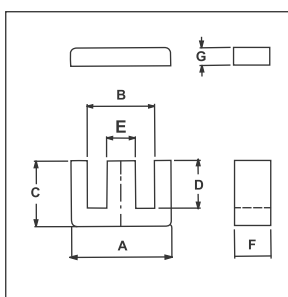


FIG. 21

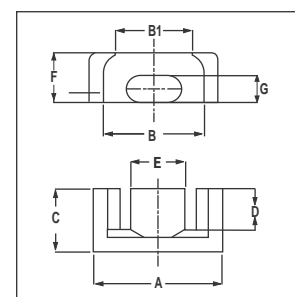


FIG. 22

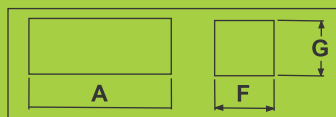
I - B A R C O R E S

| Type | Fig | Dimensions (mm) | | |
|----------|-----|-----------------|------------|------------|
| | | A | B | C |
| I20304 | 17 | 203.2±1 | 15±0.5 | 4.5±0.3 |
| I18640 | 17 | 186±3.0 | 28±0.5 | 40±0.2 |
| I14145 | 17 | 141±6.0 | 44.5±3.0 | 30±1.1 |
| I14030 | 17 | 140±6.0 | 71±3.0 | 30±1.1 |
| I13040 | 17 | 130±1.0 | 40±0.5 | 25±0.5 |
| I13025G6 | 17 | 130±0.8 | 36±0.3 | 25±0.3 |
| I12620 | 17 | 126.0±4.0 | 28.0±1.00 | 20.0±0.60 |
| I12604 | 17 | 126±4.0 | 28±1.0 | 4±0.6 |
| I12403 | 17 | 124±1/-1.5 | 7.5±0.2 | 3.5±0.2 |
| I12324 | 17 | 123±3 | 58.5±1.5 | 24.5±1.0 |
| I10610 | 17 | 106±1.2 | 25.4±0.4 | 10±0.2 |
| I10503A | 17 | 105±0.2 | 27.0±0.8 | 3.14±0.2 |
| I10025A | 17 | 102±0.25 | 25.4±0.38 | 25.4±0.38 |
| I10013A | 17 | 101.6±0.25 | 25.4±0.38 | 12.7±0.40 |
| I10010 | 17 | 101±0.5 | 25.4±0.4 | 10±0.5 |
| I1003A | 17 | 101.6±1.2 | 25.4±0.5 | 3.14±0.2 |
| I10025 | 17 | 101.6±2.0 | 25.4±0.8 | 25.4±0.8 |
| I9330 | 17 | 93.0±1.8 | 27.5±0.6 | 30.0±0.6 |
| I9320 | 17 | 93.0±1.8 | 27.5±0.5 | 20±0.6 |
| I9316 | 17 | 93.0±1.8 | 27.5±0.6 | 16.0±0.6 |
| I9004 | 17 | 90±1.4 | 8±0.2 | 4±0.15 |
| I8625 | 17 | 86±2.0 | 25.4±0.8 | 25.4±0.8 |
| I8504 | 17 | 85±0.2 | 12.5±0.1 | 4±0.1 |
| I8330 | 17 | 81±1.20 | 30.0±1.00 | 28±1.1 |
| I8020 | 17 | 80.0±0.5 | 20.0±0.8 | 20.0±0.4 |
| I7625 | 17 | 76.0±0.5 | 25.4±0.3 | 25.4±0.3 |
| I7020 | 17 | 70.0±0.5 | 30.0±0.6 | 20.0±0.6 |
| I6803 | 17 | 68±0.5 | 7.1±0.2 | 2.9±0.2 |
| I6803 | 17 | 68±0.15/-0.5 | 7±0.1 | 2.9±0.1 |
| I6803A | 17 | 68±0.5/-2 | 13±0.24 | 3±0.1 |
| I6713 | 17 | 67.56±0.2 | 25.4±0.2 | 12.7±0.2 |
| I6540 | 17 | 65.0±1.0 | 40±0.5 | 25±0.5 |
| I6204 | 17 | 62.0±0.6 | 31±0.5 | 4±0.4 |
| I6030 | 17 | 60.0±1.0 | 28.0±0.5 | 30.0±0.5 |
| I6004 | 17 | 60±0.6 | 23.0±0.5 | 4±0.4 |
| I6015 | 17 | 59.5±0.80 | 15.25±0.50 | 15.25±0.50 |
| I5905 | 17 | 59.5±0.3 | 14.5±0.3 | 4.8±0.2 |
| I5405 | 17 | 54.5±0.3 | 14.5±0.3 | 4.8±0.2 |
| I5405 | 17 | 54.5±0.3 | 14.5±0.3 | 4.8±0.2 |
| I5125 | 17 | 51.45±0.2 | 25.4±0.2 | 25.4±0.2 |
| I4502 | 17 | 45±0.6 | 9±0.4 | 2.3±0.3 |
| I4504C | 17 | 45±0.5 | 5.1±0.15 | 4±0.15 |
| I3016 | 17 | 30.0±0.6 | 16.0±0.5 | 27.5±0.5 |

T I L E S / P L A T E S

| Type | Fig | Dimensions (mm) | | |
|----------|-----|-----------------|-----------|-----------|
| | | A | B | C |
| I15005B | 17 | 150±0.2 | 100±1.0 | 5±0.2 |
| I15008B | 17 | 150±0.2 | 100±0.2 | 8±0.2 |
| I15010B | 17 | 150±0.2 | 100±2.0 | 10±0.2 |
| I125100 | 17 | 125±4.0 | 100±0.4 | 10±0.2 |
| I10008 | 17 | 100±0.4 | 100±0.4 | 7.5±0.2 |
| I10075N | 17 | 100.0±0.8 | 74.6±0.6 | 5.0±0.2 |
| I10020G6 | 17 | 100±0.8 | 58±0.5 | 20±0.3 |
| I9318 | 17 | 93.0±1.80 | 50.0±0.90 | 18.0±0.50 |
| I9328 | 17 | 93.0±1.80 | 50.0±0.90 | 28.0±0.50 |
| I5814 | 17 | 58.0±0.2 | 54.0±0.2 | 14.0±0.2 |
| I5555 | 17 | 55.65±0.6 | 55±0.6 | 5±0.1 |
| I5509 | 17 | 55.0±0.2 | 44.0±0.2 | 9.0±0.2 |
| I4504 | 17 | 45±0.3 | 45±0.3 | 4-0.1 |
| I4025G6 | 17 | 40±0.3 | 36±0.3 | 25±0.3 |
| I3030 | 17 | 30.0±0.6 | 30.0±0.5 | 27.5±0.5 |
| I2830 | 17 | 30.0±0.40 | 28.0±0.40 | 18.5±0.20 |
| I2525 | 17 | 25.0±0.40 | 25.0±0.40 | 25.0±0.4 |
| I2020 | 17 | 19.8±0.30 | 20.0±0.20 | 19.8±0.30 |
| I2010 | 17 | 19.8±0.30 | 20.0±0.20 | 9.85±0.30 |

FIG. 17





EFF CORES

| Type | Fig | Dimension (mm) | | | | | | | Effective Parameters | | AL (nH)+30% -20% | | |
|----------|-----|----------------|------------|-----------|-----------|-----------|-----------|----------|----------------------|----------------------|---------------------|-------|-------|
| | | A | B | C | D | E | F | G | Le(mm) | Ae(mm ²) | CF139 | CF297 | CF295 |
| EFF3009 | 8 | 30.0±0.8 | 22.4±0.75 | 15.0±0.15 | 11.2±0.3 | 14.6±0.25 | 9.1±0.2 | 4.9±0.15 | 68 | 69 | 2100 | 2300 | 2800 |
| EFF2509 | 8 | 25.0±0.65 | 18.7±0.6 | 12.5±0.15 | 9.3±0.25 | 11.4±0.2 | 9.1±0.2 | 5.2±0.15 | 57 | 58 | 2050 | 2200 | 2730 |
| EFF2309 | 8 | 22.8±0.5 | 16.8±0.4 | 15.0±0.15 | 11.0±0.15 | 10.0±0.25 | 8.6±0.25 | 4.5±0.15 | 65 | 56.5 | 1800 | 1900 | 2400 |
| EE2007A | 8 | 20.6±0.5 | 16.0±0.5 | 10.0±0.15 | 7.7±0.25 | 8.9±0.2 | 6.65±0.15 | 3.6±0.15 | 47 | 31 | 1350 | 1450 | 1800 |
| EFF1505A | 8 | 15.7±0.4 | 11.35±0.35 | 7.5±0.15 | 5.5±0.25 | 5.3±0.15 | 4.65±0.15 | 2.4±0.1 | 34 | 15 | 900 | 1000 | 1200 |

EC CORES

| Type | Fig | Dimensions(mm) | | | | | | | Effective Parameters | | AL (nH)+30% -20% | |
|---------|-----|----------------|------------|-----------|------------|------------|-----------|-----------|----------------------|----------------------|---------------------|-------|
| | | A | B | C | D | E | F | G | Le(mm) | Ae(mm ²) | CF139 | CF297 |
| EC7017 | 4 | 70.0±1.7 | 44.5±1.2 | 34.5±0.3 | 22.75±0.45 | 16.4±0.4 | 16.4±0.4 | 4.75±0.25 | 144 | 279 | 4400 | 4600 |
| EC4215 | 5 | 42.0±0.8 | 29.2min | 22.4±0.3 | 15.4±0.3 | 15.5±0.3 | 15.5±0.4 | - | 99 | 203 | 4500 | 4700 |
| EC4112 | 6 | 40.6±1.0 | 26.3±1.5 | 19.35±0.3 | 13.5±0.8 | 11.9-0.6 | 11.9-0.6 | 3.0±0.5 | 89 | 121 | 3000 | 3150 |
| EC4013L | 5 | 40.0±0.5 | 29.6min | 24.0±0.2 | 17.0±0.25 | 13.25±0.25 | 13.4±0.20 | - | 105 | 147 | 3300 | 3450 |
| EC4013 | 5 | 40.0±0.5 | 29.6min | 22.32±0.2 | 15.75±0.2 | 13.25±0.25 | 13.4±0.20 | - | 102 | 147 | 3200 | 3400 |
| EC3510 | 4 | 34.5±0.8 | 22.75±0.55 | 17.3±0.15 | 11.9±0.7 | 9.8-0.6 | 9.8-0.6 | 2.75±0.25 | 77 | 84 | 2300 | 2500 |

ETD CORES

| Type | Fig | Dimensions(mm) | | | | | | Effective Parameters | | AL (nH)+30% -20% | | |
|----------|-----|----------------|----------|-----------|------------|-------------|-------------|----------------------|----------------------|---------------------|-------|-------|
| | | A | B | C | D | E | F | Le(mm) | Ae(mm ²) | CF139 | CF297 | CF295 |
| ETD5922 | 7 | 59.8±1.4 | 44.7±1.1 | 31.0±0.2 | 22.45±0.45 | 21.65±0.45 | 21.65±0.45 | 139 | 368 | 5300 | 5500 | 6900 |
| ETD5419 | 7 | 54.5±1.3 | 41.2±1.1 | 27.6±0.2 | 20.2±0.4 | 18.9±0.4 | 18.9±0.4 | 127 | 280 | 4450 | 4600 | 5600 |
| ETD4917 | 7 | 48.5±1.3 | 36.1±1.8 | 24.9-0.4 | 18.5±0.3 | 16.7-0.8 | 16.7-0.8 | 114 | 211 | 3800 | 3900 | 4800 |
| ETD4743 | 7 | 47±0.75 | 37±0.75 | 22.3±0.2 | 14.4±0.2 | 20±0.35 | 25±0.5 | 91.1 | 385 | 8800 | 9500 | 11300 |
| ETD4732 | 7 | 47±0.75 | 37±0.75 | 16.05±0.2 | 8.15±0.2 | 20±0.35 | 25±0.5 | 68.8 | 385 | 10800 | 11300 | 12000 |
| ETD4415 | 7 | 43.8+1.2/-0.8 | 32.5+1.6 | 22.5-0.4 | 16.3min | 15.2-0.8 | 15.2-0.8 | 103 | 173 | 3500 | 3600 | 4400 |
| ETD3913M | 7 | 38.9+1.1/-0.7 | 29.3+1.6 | 20.0±0.2 | 14.9±0.3 | 12.8-0.6 | 12.8-0.6 | 92.2 | 125 | 2700 | 2900 | 3500 |
| ETD3913 | 7 | 38.9+1.1/-0.7 | 29.3+1.6 | 20.0-0.4 | 14.2min | 12.8-0.6 | 12.8-0.6 | 92 | 125 | 2700 | 2900 | 3400 |
| ETD3913H | 7 | 39.1±0.9 | 30.1±0.8 | 22.2±0.2 | 16.9±0.2 | 12.5±0.3 | 12.5±0.3 | 101.9 | 125.2 | 2700 | 2800 | 3400 |
| ETD3913L | 7 | 39.0±0.5 | 29.3min | 21.2min | 15.9min | 12.5±0.3 | 12.5±0.3 | 96.4 | 127.9 | 3000 | 3200 | 4000 |
| ETD3411 | 7 | 34.0+1/-0.6 | 25.6+1.4 | 17.5-0.4 | 11.8min | 11.1-0.6 | 11.1-0.6 | 78 | 97 | 2500 | 2600 | 3300 |
| ETD3411A | 7 | 34.0+1/-0.6 | 25.6+1.4 | 13.0+0.13 | 7.8±0.13 | 10.8±0.23 | 10.8±0.23 | 63 | 98 | 2500 | 2600 | 3300 |
| ETD2910 | 7 | 30.6-1.6 | 22.0±1.4 | 16.0-0.4 | 10.7 | 9.8-0.6 | 9.8-0.6 | 71 | 76 | 2200 | 2250 | 2800 |
| ETD2910F | 7 | 29.8±0.8 | 22.2+1.2 | 16.1±0.2 | 11.3±0.3 | 9.4+0.3-0.2 | 9.4+0.3-0.2 | 71 | 76 | 2200 | 2250 | 2800 |
| ETD2910S | 7 | 29.8+0.8-0.8 | 22.0min | 16.5±0.2 | 11.5±0.2 | 9.5±0.3 | 9.5±0.3 | 72.9 | 76.7 | 2200 | 2250 | 2800 |

EER CORES

| Type | Fig | Dimension (mm) | | | | | | Effective Parameters | | AL (nH)+30%/-20% | |
|---------|-----|----------------|----------|-----------|---------------|-----------|-----------|----------------------|----------------------|------------------|-------|
| | | A | B | C | D | E | F | Le(mm) | Ae(mm ²) | CF139 | CF297 |
| ER5322 | 7 | 53.0±0.8 | 39.4±0.7 | 23.2±0.3 | 16.3±0.2 | 19.9±0.3 | 21.5±0.3 | 107 | 315 | 6250 | 6600 |
| ER4518A | 7 | 45.0±0.9 | 33.8±0.8 | 17.5±0.2 | 10.95±0.25 | 17.6±0.4 | 17.6±0.4 | 81 | 232 | 6400 | 6800 |
| ER4217 | 7 | 42.15±0.65 | 30.3±0.5 | 25.0±0.15 | 17.5±0.15 | 17.3±0.25 | 17.3±0.25 | 107 | 240 | 4600 | 4900 |
| ER4215 | 7 | 42.15±0.8 | 31min. | 21.6±0.2 | 15.95±0.35 | 15.1±0.4 | 15.1±0.4 | 99 | 177 | 3600 | 3800 |
| ER3913 | 7 | 39.0±1.4 | 28.6±1.0 | 22.2±0.2 | 17.0±0.25 | 12.8±0.2 | 12.8±0.2 | 101 | 131 | 2850 | 3000 |
| ER3511 | 7 | 35.0±0.5 | 25.6±1.0 | 22.5±0.3 | 16.5±0.3 | 11.3±0.3 | 11.3±0.3 | 97 | 111 | 2750 | 2900 |
| ER3511B | 7 | 35.0±0.5 | 25.6±1.0 | 20.7±0.3 | 14.7±0.3 | 11.3±0.3 | 11.3±0.3 | 89.6 | 110 | 2700 | 2850 |
| ER2811 | 7 | 28.5+0.6-0.5 | 21.2min | 16.9±0.25 | 12.5+0.3-0.25 | 9.9±0.25 | 11.4±0.25 | 75 | 83 | 2400 | 2600 |
| ER2811A | 7 | 28.5+0.6-0.5 | 21.2min | 14.0±0.2 | 9.65±0.25 | 9.9±0.25 | 11.4±0.25 | 64 | 82 | 2900 | 3100 |
| ER2811B | 7 | 28.5+0.6-0.5 | 21.2min | 21.4±0.3 | 15.4±0.3 | 9.9±0.25 | 11.4±0.25 | 50 | 78 | 3400 | 3600 |

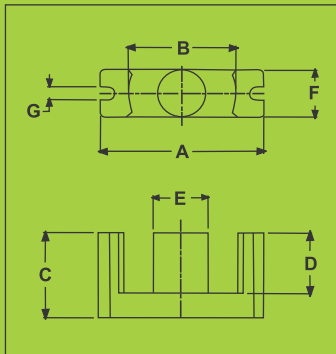


FIG 4

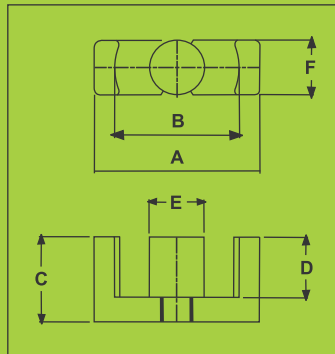


FIG 5

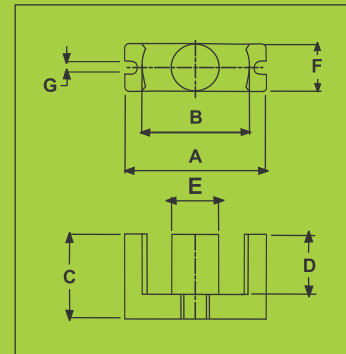


FIG 6

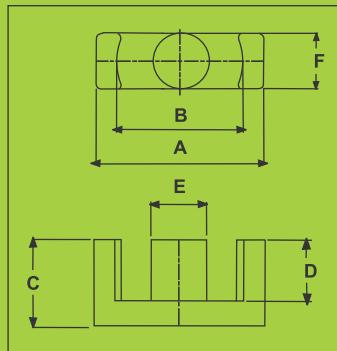


FIG 7

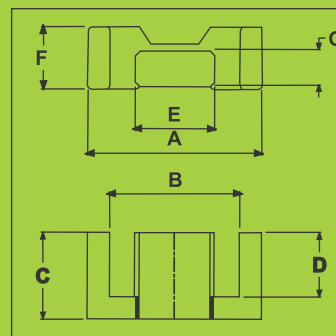


FIG 8



R M C O R E S

| Type | Fig | Dimensions (mm) | | | | | | | | Effective Parameters | | AL (nH)+30% -20% | | | |
|------|-----|-----------------|----------|------------|------------|------------|------------|------------|----------|----------------------|----------------------|---------------------|-------|-------|-------|
| | | A | B1 | B2 | C | D | E | F | G | Le(mm) | Ae(mm ²) | CF139 | CF297 | CF295 | CF195 |
| RM14 | 10 | 41.6±0.6 | 17.0 min | 29.5±0.5 | 15.05±0.15 | 10.55±0.15 | 14.75±0.25 | 34.3±0.5 | 18.7±0.3 | 70 | 200 | 5450 | 5600 | 6900 | 8500 |
| RM12 | 10 | 36.75±0.65 | 13.4 min | 25.5±0.5 | 11.8±0.15 | 8.65±0.15 | 12.6±0.2 | 29.25±0.55 | 16.1±0.3 | 57.3 | 138 | 5000 | 5400 | 6400 | 8200 |
| RM10 | 10 | 27.85±0.65 | 10.9 min | 21.65±0.45 | 9.35±0.15 | 6.35±0.15 | 10.7±0.2 | 24.15±0.55 | 13.2±0.3 | 44 | 98 | 4200 | 4400 | 5200 | 6400 |
| RM8 | 10 | 22.75±0.45 | 9.8 min | 17.3±0.3 | 8.2±0.15 | 5.5±0.15 | 8.4±0.15 | 19.25±0.45 | 10.8±0.2 | 38 | 64 | 2600 | 2800 | 3200 | 3900 |
| RM6 | 10 | 17.6±0.35 | 8.4 min | 12.65±0.25 | 6.2±0.15 | 4.1±0.15 | 6.35±0.15 | 14.4±0.3 | 8.0±0.3 | 28.6 | 36.6 | 2100 | 2300 | 2900 | 3350 |

P Q C O R E S

| Type | Fig | Dimensions (mm) | | | | | | | | Effective Parameters | | AL (nH)+30% -20% | | |
|---------|-----|-----------------|---------|-----------|------------|------------|------------|-----------|-----------|----------------------|----------------------|---------------------|-------|-------|
| | | A | B1 | B2 | C | D | E | F | G | Le(mm) | Ae(mm ²) | CF139 | CF297 | CF295 |
| PQ7132 | 11 | 71.0±1.5 | 48.5min | 29.0±1.2 | 26.4±0.2 | 18.95±0.35 | 24.0±0.15 | 32.0±0.8 | 25.8min | 132 | 428 | 7200 | 7500 | 9000 |
| PQ5050 | 11 | 51.0±0.7 | 32min | 44.0±0.7 | 25.0±0.25 | 18.1±0.25 | 20.0±0.35 | 32.0±0.6 | 18min | 113 | 328 | 6300 | 6700 | 8200 |
| PQ4040F | 11 | 41.5±0.9 | 28min | 37.0±0.6 | 19.9±0.15 | 14.75±0.2 | 14.9±0.3 | 28.0±0.6 | 15min | 102 | 201 | 4400 | 4600 | 5500 |
| PQ4025 | 11 | 40.5±0.9 | 28min | 37.0±0.6 | 12.5±0.15 | 8.07±0.15 | 14.9±0.3 | 28.0±0.6 | 23.6min | 65.81 | 188.3 | 4500 | 4700 | 6500 |
| PQ3542 | 11 | 35.1±0.6 | 23.5min | 32±0.6 | 21.25±0.15 | 16.35±0.2 | 14.35±0.25 | 26±0.5 | - | 93.2 | 169.1 | 4100 | 4400 | 5400 |
| PQ3540 | 11 | 35.1±0.6 | 23.5,im | 32±0.5 | 20.15±0.15 | 15.5±0.15 | 14.35±0.25 | 26±0.5 | - | 95.5 | 169.4 | 4200 | 4400 | 5400 |
| PQ3535 | 11 | 36.1±0.6 | 23.5min | 32.0±0.5 | 17.35±0.15 | 12.5±0.15 | 14.4±0.25 | 26.0±0.5 | 11.8min | 86.1 | 190 | 4200 | 4400 | 5600 |
| PQ3238 | 11 | 33.0±0.50 | 19min | 27.5±0.50 | 19.15±0.15 | 14.85±0.15 | 13.5±0.25 | 22.0±0.50 | 11.6min | 93.5 | 165 | 3700 | 3900 | 5100 |
| PQ3230 | 11 | 33.0±0.5 | 19min | 27.5±0.5 | 15.15±0.15 | 10.65±0.15 | 13.5±0.25 | 22.0±0.5 | 11.6min | 74.7 | 167 | 4550 | 4700 | 5700 |
| PQ3225 | 11 | 33.0±0.50 | 19.0min | 27.5±0.5 | 12.5±0.15 | 8.1±0.15 | 13.5±0.25 | 22.0±0.50 | 11.6min | 56.2 | 158.3 | 4800 | 5000 | 6100 |
| PQ3220 | 11 | 33.0±0.5 | 19.0min | 27.5±0.5 | 10.3±0.15 | 5.75±0.15 | 13.5±0.25 | 22.0±0.5 | 11.6min | 55.9 | 169 | 5650 | 6100 | 7600 |
| PQ2625 | 11 | 27.3±0.46 | 15.5min | 22.5±0.46 | 12.35±0.15 | 8.05±0.15 | 12.0±0.2 | 19.0±0.45 | 10.5min | 54.3 | 120 | 4500 | 4650 | 5700 |
| PQ2620 | 11 | 27.3±0.46 | 15.5min | 22.5±0.45 | 10.1±0.15 | 5.75±0.15 | 12.0±0.2 | 19.0±0.45 | 10.5min | 48.3 | 121 | 4500 | 4900 | 6400 |
| PQ2616 | 11 | 27.3±0.46 | 15.5min | 22.5±0.45 | 8.3±0.15 | 3.95±0.15 | 12±0.2 | 19.0±0.45 | 10.5min | 37.2 | 125 | 5500 | 6000 | 7800 |
| PQ2610 | 11 | 27.2±0.45 | 15.5min | 22.5±0.45 | 4.7±0.13 | 1.5±0.15 | 12.0±0.2 | 19.0±0.45 | 10.5min | 27.1 | 105 | 5500 | 6000 | 7800 |
| PQ2609 | 11 | 27.25±0.45 | 15.5min | 22.5±0.40 | 4.7±0.13 | 1.47±0.15 | 11.99±0.45 | 19.0±0.45 | 10.8±0.25 | 25.5 | 127.8 | 6900 | 7200 | 9800 |
| PQ2020 | 11 | 21.3±0.4 | 12min | 18.0±0.4 | 10.1±0.13 | 7.15±0.15 | 8.8±0.2 | 14.0±0.4 | 7.9min | 45.7 | 62.6 | 2650 | 2750 | 3300 |
| PQ2016 | 11 | 21.3±0.40 | 12min | 17.6min | 8.1±0.13 | 5.15±0.15 | 8.8±0.2 | 14.0±0.40 | 7.9min | 37.6 | 61.9 | 2700 | 2900 | 3800 |
| PQ2010 | 11 | 21.2±0.4 | 12min | 17.6min | 4.7±0.13 | 1.5±0.15 | 8.87±0.2 | 14.0±0.4 | 7.9min | 22.7 | 62.5 | 3600 | 3900 | 5100 |

P O T C O R E S

| Type | Fig | Dimensions (mm) | | | | | | | | Effective Parameters | | AL (nH)+30% -20% | | | | |
|---------|-----|-----------------|----------------|---------|-----------|-----------|-----------|-----------|-----------|----------------------|----------------------|---------------------|-------|-------|-------|-------|
| | | D1 | D2 | G | H1 | H2 | D3 | D4 | a | Le(mm) | Ae(mm ²) | CF139 | CF297 | CF140 | CF130 | CF195 |
| P3622 | 15 | 35.5±0.5 | 30.5±0.4 | 5.2±0.4 | 10.8-0.5 | 7.8±0.3 | 15.9±0.3 | 5.5±0.12 | 26.2±0.6 | 52 | 202 | 7700 | 8400 | 8800 | 10000 | 13700 |
| P3019A | 15 | 30.0±0.5 | 25.4±0.4 | 4.8±0.6 | 9.95±0.25 | 7.2±0.2 | 13.32±0.2 | 5.5±0.15 | | 45.77 | 141.8 | 5800 | 6300 | 6500 | 7300 | 9800 |
| P3019 | 15 | 30.0±0.5 | 25.4±0.4 | 4.8±0.6 | 9.4±0.12 | 6.63±0.13 | 13.32±0.2 | 5.55±0.15 | 20.6±0.5 | 45.2 | 137 | 5800 | 6300 | 6600 | 7450 | 10100 |
| P2616 | 15 | 25.5±0.5 | 21.6±0.45 | 3.8±0.6 | 8.05±0.12 | 5.63±0.13 | 11.3±0.2 | 5.55±0.15 | 18.05±0.4 | 37.2 | 93 | 5100 | 5500 | 5800 | 6700 | 9400 |
| P2213 | 15 | 21.6±0.4 | 18.2±0.3 | 3.8±0.6 | 6.7±0.1 | 4.73±0.13 | 9.25±0.15 | 4.55±0.15 | 15.3±0.15 | 31.6 | 63 | 3400 | 3700 | 3800 | 4250 | 5500 |
| P22132M | 15 | 21.6±0.4 | 18.2±0.3 | 3.8±0.6 | 6.7±0.1 | 4.73±0.13 | 9.25±0.15 | 5.55±0.15 | 15.3±0.5 | 31.6 | 63 | 3300 | 3600 | | 4100 | 5200 |
| P1811 | 15 | 18.0±0.5 | 15.2±0.25 | 3.4±0.6 | 5.25±0.1 | 3.72±0.13 | 7.45±0.15 | 3.1±0.12 | 12.85±0.5 | 25.9 | 43 | 2900 | 3100 | 3300 | 3700 | 4800 |
| P1408 | 15 | 14.0±0.2 | 11.8±0.2 | 3.8±0.6 | 4.15±0.15 | 2.9±0.15 | 5.9±0.15 | 3.1±0.12 | 8.9±0.3 | 19 | 25.8 | 2150 | 2300 | 2350 | 2600 | 3300 |
| P0903 | 15 | 9.15±0.5 | 7.62±0.13-0.12 | 1.9±0.5 | 2.65±0.1 | 1.88±0.5 | 3.8±0.1 | 2.05±0.05 | 7.2±0.2 | 11.97 | 10.46 | 1250 | 1300 | 1350 | 1450 | 1750 |

EP CORES

| Type | Fig | Dimensions (mm) | | | | | | | Effective Parameters | | AL (nH)+30% -20% | | | |
|------|-----|-----------------|----------|-----------|-----------|-----------|-----------|----------|----------------------|----------------------|---------------------|-------|-------|-------|
| | | A | B1 | C | D | E | F | G | Le(mm) | Ae(mm ²) | CF139 | CF297 | CF295 | CF195 |
| EP20 | 12 | 24.0±0.5 | 16.5±0.4 | 10.7±0.15 | 7.2±0.2 | 8.75±0.25 | 14.95±0.3 | | 39.5 | 80 | 4200 | 4600 | 5500 | 7700 |
| EP15 | 12 | 14.5±0.2 | 12.1±0.2 | 5.15±0.15 | 3.45±0.15 | 7.5±0.10 | 13.55±0.3 | | 22.81 | 46.3 | 3650 | 3900 | 4600 | 6100 |
| EP13 | 12 | 12.5±0.3 | 6.5±0.15 | 4.65±0.15 | 4.35±0.15 | 8.8±0.2 | 2.36±0.13 | | 24.5 | 19.5 | 1500 | 1640 | 1850 | 2450 |
| EP10 | 12 | 11.5±0.3 | 9.4±0.2 | 5.1±0.15 | 3.75±0.15 | 3.3±0.15 | 7.6±0.2 | 1.8±0.13 | 19.6 | 11.3 | 1000 | 1090 | 1200 | 1600 |
| EP7 | 12 | 9.2±0.2 | 7.4±0.2 | 3.75±0.15 | 2.65±0.15 | 3.3±0.15 | 6.35±0.15 | 1.7±0.1 | 15.7 | 10.3 | 1050 | 1150 | 1250 | 1600 |

NiZn TOROID CORES

| Type | Fig | Dimensions (mm) | | | Impedance , Z (Ω) , N=1T | |
|--------|-----|-----------------|----------|-----------|--------------------------|---------------|
| | | A | B | C | 25 MHz (min) | 100 MHz (min) |
| T2813A | 1 | 27.5±0.6 | 14.9±0.5 | 13±0.5 | 30 | 80 |
| T3119 | 1 | 31.5±1.0 | 19±0.6 | 16±0.5 | 35 | 80 |
| T3825C | 1 | 38.1±0.7 | 19±0.5 | 25.25±0.5 | 80 | 150 |
| T6325C | 1 | 63±1.3 | 38±0.8 | 25±0.5 | 80 | 150 |
| RH1428 | 1 | 14±0.5 | 8.2±0.3 | 28.5±0.75 | 80 | 150 |
| RH1245 | 1 | 12±0.3 | 6.3±0.3 | 45±0.8 | 80 | 150 |
| RH1220 | 1 | 12±0.3 | 5.6±0.3 | 20±0.6 | 100 | 170 |

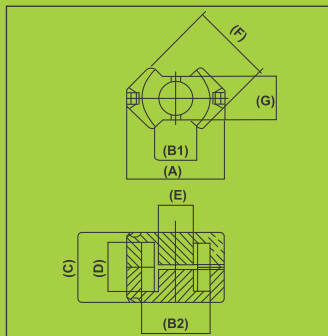


FIG. 10

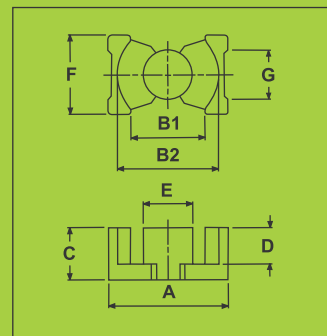


FIG. 11

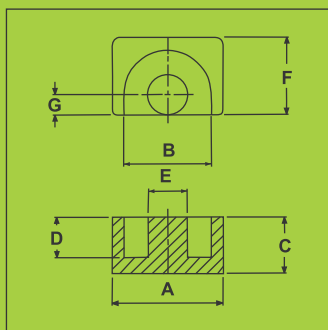


FIG. 12

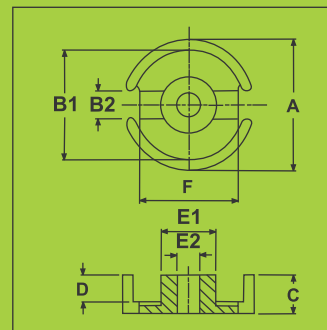


FIG. 13



ET & UT CORES

| Type | Fig. | DIMENSIONS (mm) | | | | | | Effective Parameters | | AL (nH)+30% -20% | |
|---------|------|-----------------|------------|------------|-----------|-----------|-----------|----------------------|----------------------|---------------------|-------|
| | | A | B | C | D | E | F | Le(mm) | Ae(mm ²) | CF195 | CF197 |
| ET 3535 | 22 | 35.3 ±0.6 | 26.8 min | 35.3 ±0.6 | 26.8 min | 7.4 ±0.25 | 7.4 ±0.25 | 86.9 | 57.1 | 4100 | 5750 |
| ET2930 | 22 | 29.0 ±0.4 | 23.0 ±0.4 | 30.0 ±0.4 | 24.0 ±0.4 | 5.0 ±0.25 | 5.0 ±0.3 | 74.5 | 27.9 | 2350 | 3300 |
| ET2828 | 22 | 28.4 ±0.5 | 22.2 min | 28.4 ±0.5 | 22.2 min | 5.0 ±0.3 | 5.0 ±0.3 | 70 | 27 | 2400 | 3400 |
| ET2424 | 22 | 24.2 ±0.5 | 19.0 min | 24.2 ±0.5 | 19.0 min | 4.0±0.2 | 4.0 ±0.3 | 60 | 18 | 1900 | 2650 |
| UT20 | 23 | 20.6 ±0.3 | 16.0 ±0.3 | 14.1 ±0.25 | 7.5 ±0.15 | 4.1 ±0.2 | 4.6 ±0.2 | 53 | 13 | 1550 | 2150 |
| UT19 | 23 | 19.5 ±0.3 | 13.1 ±0.25 | 14.2 ±0.3 | 7.0 ±0.2 | 4.0 ±0.2 | 5.0 ±0.3 | 51.2 | 16 | 1950 | 2750 |

PLANAR E CORES & PLATE

| Type | Fig | DIMENSIONS (mm) | | | | | | | Effective Parameters | | AL (nH)+30% -20% |
|----------|-----|-----------------|------------|-----------|-----------|------------|-----------|----------|----------------------|----------------------|---------------------|
| | | A | B | C | D | E | F | G | Le(mm) | Ae(mm ²) | CF139 |
| EE15330P | 24 | 153.0±2.0 | 129±2.0 | 31.0±0.5 | 21±0.5 | 22±0.5 | 55±0.8 | | 223.7 | 1163.1 | 12000 |
| EE6814P | 24 | 68.0±1.3 | 55.6±1.1 | 13.5±0.15 | 6.5±0.15 | 12.15±0.15 | 50.8±1.0 | | 89.9 | 671.5 | 14600 |
| EE6450P | 24 | 64.0±1.3 | 53.6±1.1 | 10.2±0.15 | 5.1±0.15 | 10.2±0.2 | 50.8±1.1 | | 80 | 519 | 13000 |
| EI6450P | 24 | 64.0±1.3 | 53.6±1.1 | 10.2±0.15 | 5.1±0.15 | 10.2±0.2 | 50.8±1.1 | | 70 | 515 | 14000 |
| | 25 | 64.0±1.3 | 50.8±1.1 | 5.1±0.15 | | | | | | | |
| EE6440P | 24 | 64.0±1.3 | 53.6±1.1 | 20±0.15 | 15.0±0.25 | 10.2±0.2 | 50.8±1.1 | | 119.3 | 515 | 9800 |
| EE6430P | 25 | 64.0±1.3 | 53.6±1.1 | 15.1±0.15 | 10.0±0.25 | 10.2±0.2 | 50.8±1.1 | | 99.3 | 521.3 | 10000 |
| EE6423P | 24 | 64.0±1.3 | 53.6±1.1 | 11.6±0.15 | 6.5±0.25 | 10.2±0.2 | 50.8±1.1 | | 85.5 | 519 | 11700 |
| EE6420P | 24 | 64.0±1.3 | 53.6±1.1 | 10.2±0.15 | 5.17±0.25 | 10.15±0.2 | 50.8±1.1 | | 80 | 515 | 12500 |
| EE6415P | 24 | 64.0±1.3 | 53.6±1.1 | 15.0±0.15 | 9.9±0.25 | 10.2±0.35 | 51.0±1.2 | | 99.7 | 503 | 10300 |
| EE5811P | 24 | 58.4±1.2 | 50.0min | 10.5±0.15 | 6.5±0.15 | 8.1±0.2 | 38.1±0.8 | | 80.6 | 308.4 | 7500 |
| EE4328P | 24 | 43.2±0.9 | 34.7min | 9.5±0.15 | 5.4±0.15 | 8.1±0.2 | 27.9±0.6 | | 61.6 | 226.8 | 8300 |
| EI4328P | 24 | 43.2±0.9 | 34.7min | 9.5±0.15 | 5.4±0.15 | 8.1±0.2 | 27.9±0.6 | | 20.5 | 226.8 | 9450 |
| | 25 | 43.2±0.9 | 27.9±0.6 | 4.1±0.2 | | | | | | | |
| EE4311P | 24 | 43.2±0.9 | 34.7min | 11.0±0.15 | 6.9±0.15 | 8.1±0.2 | 27.9±0.6 | | 67.1 | 229 | 8300 |
| EE3825P | 24 | 38.1±0.76 | 30.23min | 8.26±0.2 | 4.45±0.2 | 7.6±0.2 | 25.4±0.51 | | 52.6 | 194 | 7300 |
| EI3825P | 24 | 38.1±0.76 | 30.23min | 8.26±0.2 | 4.45±0.2 | 7.6±0.2 | 25.4±0.51 | 3.8±0.2 | 43.6 | 194 | 8500 |
| | 25 | 38.1±0.76 | 30.23min | 8.26±0.2 | 4.45±0.2 | 7.6±0.2 | 25.4±0.51 | 3.8±0.2 | | | |
| EE3220P | 24 | 31.75±0.64 | 24.9min | 6.35±0.15 | 3.18±0.2 | 6.35±0.15 | 20.32±0.4 | 3.18±0.2 | 41.7 | 129 | 6200 |
| EI3220P | 24 | 31.75±0.64 | 24.9min | 6.35±0.15 | 3.18±0.2 | 6.35±0.15 | 20.32±0.4 | 3.18±0.2 | 35.1 | 129 | 6400 |
| | 25 | 31.75±0.64 | 20.32±0.4 | 3.18±0.2 | 3.18±0.2 | | | | | | |
| EE3211P | 24 | 31.75±0.64 | 24.9min | 11.0±0.15 | 7.8±0.2 | 6.35±0.15 | 20.32±0.4 | | 60.1 | 130.9 | 5400 |
| EE3207P | 24 | 31.75±0.64 | 24.9min | 7.0±0.15 | 3.8±0.2 | 6.35±0.15 | 20.32±0.4 | | 41.7 | 130.9 | 5700 |
| EE2206P | 24 | 21.8±0.4 | 16.8±0.4 | 5.7±0.10 | 3.2±0.1 | 5.0±0.10 | 15.8±0.3 | 2.5±0.10 | 32.5 | 79 | 5200 |
| EE1804P | 24 | 18.0±0.35 | 14.0±0.3 | 4.0±0.1 | 2.0±0.1 | 4.0±0.1 | 10.0±0.2 | | 24.3 | 40 | 2700 |
| EI1804P | 24 | 18.0±0.35 | 14.0±0.3 | 4.0±0.1 | 2.0±0.1 | 4.0±0.1 | 10.0±0.2 | | 20.3 | 40 | 2850 |
| | 25 | 18.0±0.35 | 10.0±0.2 | 2.0±0.1 | | | | | | | |
| EE1608P | 26 | 15.5±0.3 | 12.92±0.25 | 4.42±0.1 | 3.0±0.1 | 3.92±.15 | 12.4±0.25 | 9.01±0.2 | 31.4 | 36.2 | 2650 |
| EE1606P | 26 | 15.5±0.3 | 12.92±0.25 | 2.92±0.1 | 1.5±0.1 | 3.92±.15 | 12.4±0.25 | 9.01±0.2 | 19.5 | 36.2 | 2650 |

PM CORES

| Type | Fig. | DIMENSIONS (mm) | | | | | | | | Effective Parameters | | AL (nH)+30% -20% | |
|---------|------|-----------------|------------|----------|-----------|----------|----------|-----------|----------|----------------------|----------------------|---------------------|-------|
| | | A | B1 | B2 | C | D | E1 | E2 | F | Le(mm) | Ae(mm ²) | CF139 | CF297 |
| PM 8770 | 28 | 85.5±1.5 | 68.15±1.05 | 41.0±1.5 | 34.8±0.25 | 24.4±0.4 | 31.2±0.5 | 8.65±0.25 | 35.0±1.0 | 146 | 910 | 12000 | 12500 |
| PM7459 | 28 | 74.3-3.0 | 57.5min. | 34.0min | 29.5±0.4 | 20.5±0.4 | 29.0±1.0 | 5.4±0.3 | 32.4max | 128 | 790 | 10000 | 10300 |
| PM 6249 | 28A | 61.0±1.0 | 49.5±0.75 | 29.0 min | 24.4±0.15 | 16.9±0.2 | 25.1±0.4 | 5.5±0.1 | 28.5 max | 109 | 570 | 9200 | 9600 |
| PM5039 | 28A | 50.0-1.7 | 39.65±0.65 | 23.4min | 19.4±0.15 | 13.4±0.2 | 19.7±0.3 | 5.5±0.2 | 23max | 84 | 370 | 7200 | 7600 |

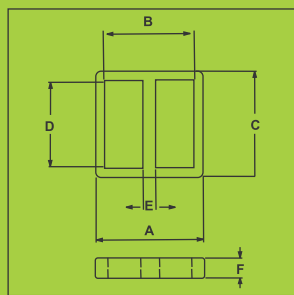


FIG. 22

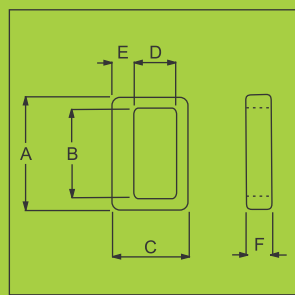


FIG. 23

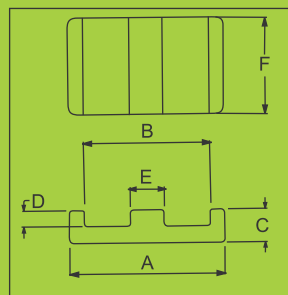


FIG. 24

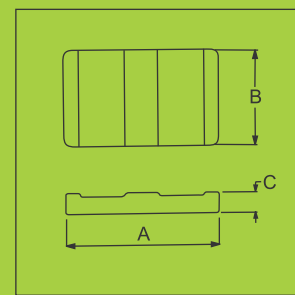


FIG. 25

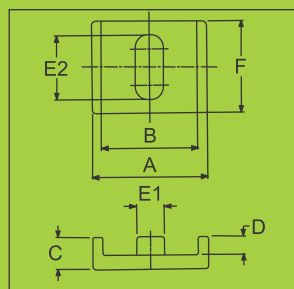


FIG. 26

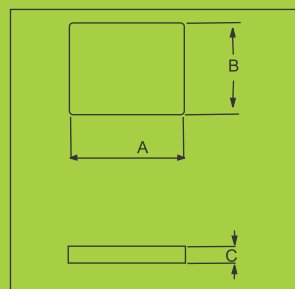


FIG. 27

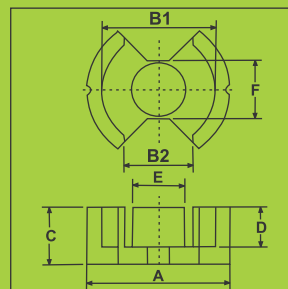


FIG. 28

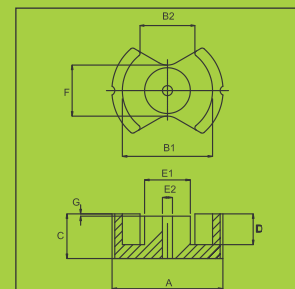


FIG. 28A



ROD CORES

| Geometry | FIG | Dimensions (mm) | |
|----------|-----|-----------------|-----------|
| | | A | B |
| R1611 | 29 | 16.3±0.40 | 10.5±0.15 |
| R1609 | 29 | 16.3±0.40 | 9.3±0.15 |
| R1025 | 29 | 25.0±0.5 | 10±0.5 |
| R1011 | 29 | 11.0±0.5 | 10±0.5 |
| R0832 | 29 | 32.0 ±0.8 | 7.95±0.25 |
| R0630 | 29 | 30.0±0.5 | 6.0±0.2 |
| R0625 | 29 | 25.0±0.25 | 6.0±0.15 |
| R0620 | 29 | 20.0±0.2 | 5.9±0.15 |
| R0615 | 29 | 15.0±0.20 | 5.9±0.15 |
| R0420 | 29 | 20.0±0.5 | 4.0±0.25 |
| R0415 | 29 | 15.0±0.50 | 4.0±0.25 |
| R0325 | 29 | 25.0±0.50 | 3.41±0.25 |

DISC CORES

| Geometry | FIG | Dimensions (mm) | |
|----------|-----|-----------------|------------|
| | | A | B |
| R3104 | 30 | 31.2±0.50 | 4.26 ±0.06 |
| R3105 | 30 | 31.2±0.50 | 5.4 ±0.06 |
| R3105A | 30 | 31.2±0.50 | 5.0 ±0.06 |
| R4008 | 30 | 40.0±1.30 | 7.5 ±0.10 |
| R3110 | 30 | 31.2±0.8 | 10±1.0 |
| R5109 | 30 | 51.5±1.0 | 9.4±1.0 |

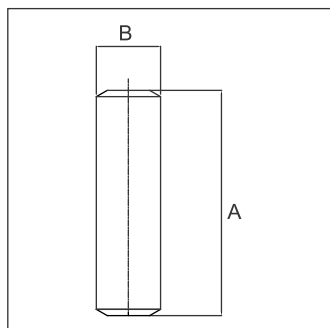


FIG. 29

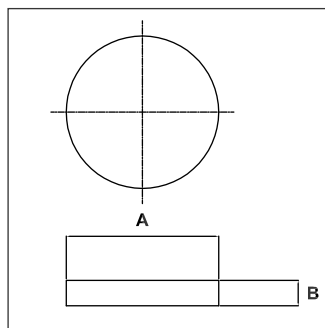


FIG. 30



Cosmo Ferrites - Jabli Plant

Govt. of India Recognized Export House

RoHS Complied Materials

ISO 9001 & 14001 Accredited Company

UL Approved Coated Products

IATF 16949 Certified Company

DSIR Approved In-House R&D

Eco-Friendly Packaging Materials

Electric Vehicle

Solar Inverters

Energy Meters

Lighting

EMI / EMC Filters

Industrial Electronics

Medical Electronics

Switch Mode Power Supply

Battery Chargers/ UPS/ Inverters

Induction Welding Applications/ Heating Applications

09/25



COSMO FERRITES LIMITED

www.cosmoferrites.com

Head Office : Office No. 517, 5th Floor, Block A, DLF Towers, Jasola,
New Delhi 110 025 INDIA

Tel. : +91 11 49398800,49398803

Fax : +91 11 49398888

E-mail : sales@cosmoferrites.com,delhi@cosmoferrites.com

Works : Jabli, Distt. Solan, Himachal Pradesh - 173 209 (INDIA)

Tel : +91 1792 277231/32/36, Fax : +91 1792 277234,

E-mail : plant@cosmoferrites.com